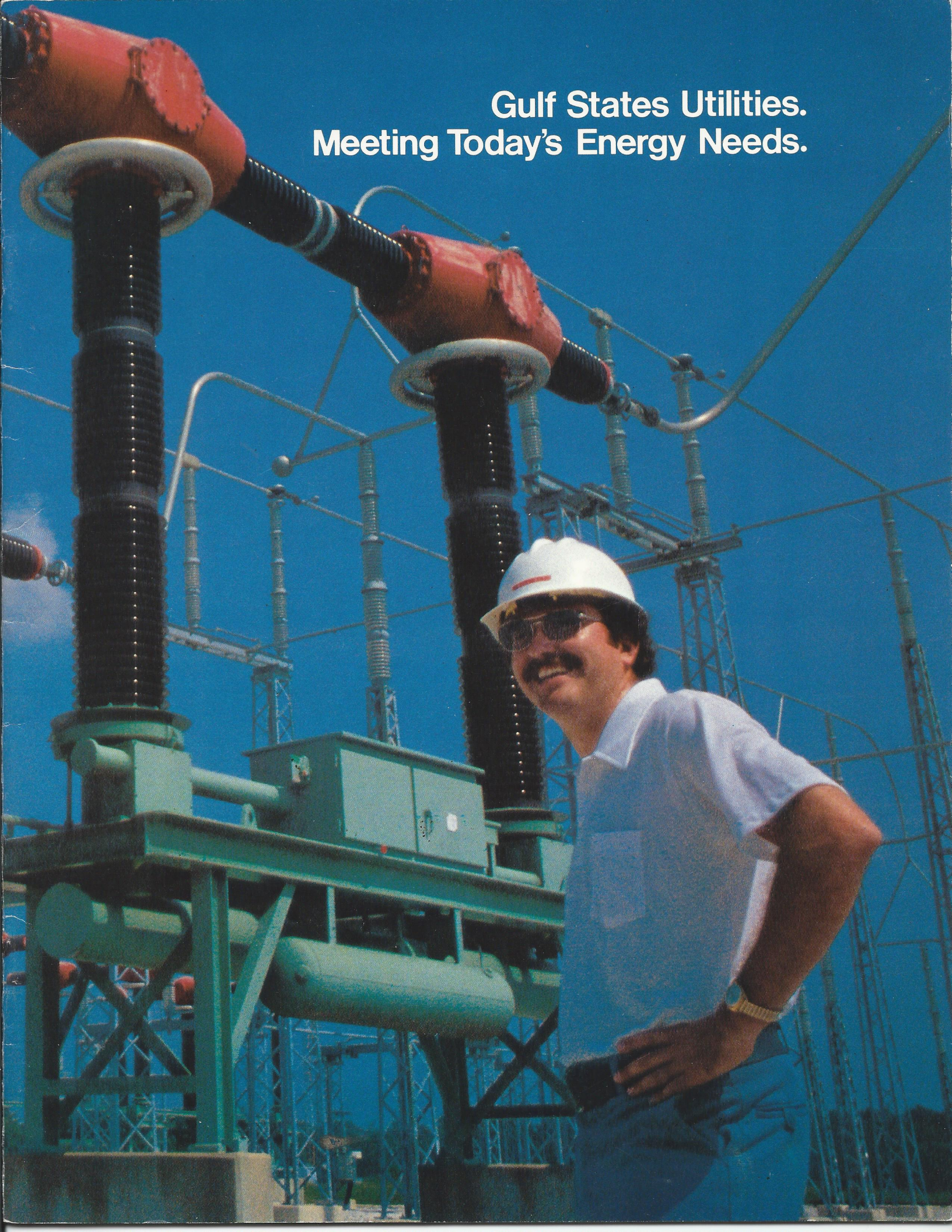


**Gulf States Utilities.
Meeting Today's Energy Needs.**

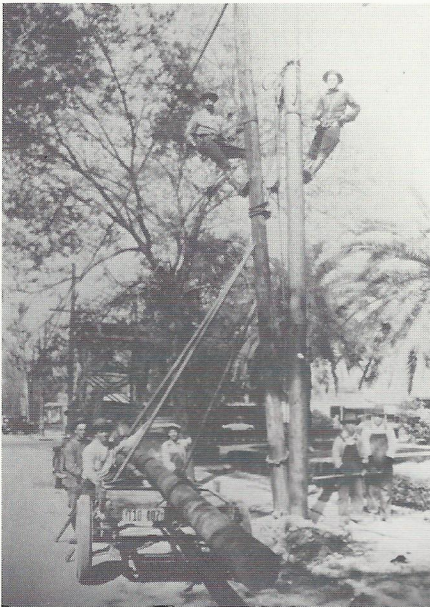


What is GSU?

Gulf States Utilities is people working together to provide its customers with economical electric power.

It all began over 50 years ago in 1925, when the Company initially consisted of an electric, water and ice business in Orange, Texas. Throughout the years all water, ice and most gas facilities were sold. Today Gulf States is an investor-owned electric company and one of the twenty largest corporations in the state of Texas. Its primary concern is to meet the ever-increasing customer demands for electric energy today, and in the future. Meeting those demands reliably and economically isn't an easy job, but we're getting it done.

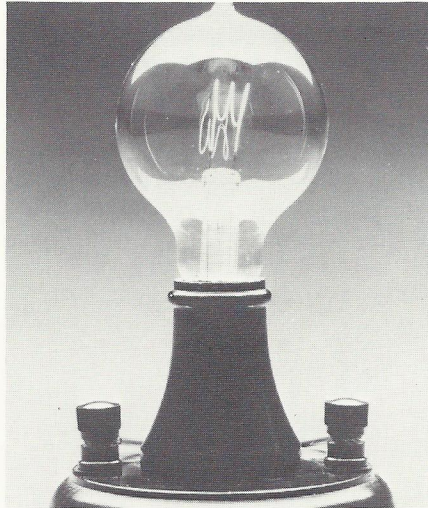
Its History



GSU lineman maintaining one of the many overhead distribution lines.

Gulf States Utilities' service area covers 28,000 square miles of southeast Texas and south-central Louisiana, encompassing over 400,000 electric and gas customers in some 287 communities with an estimated population of 1.4 million.

In addition to supplying electricity and gas to its customers, GSU also sells electricity to 14 municipally-owned systems, six rural co-ops and one other utility for resale.



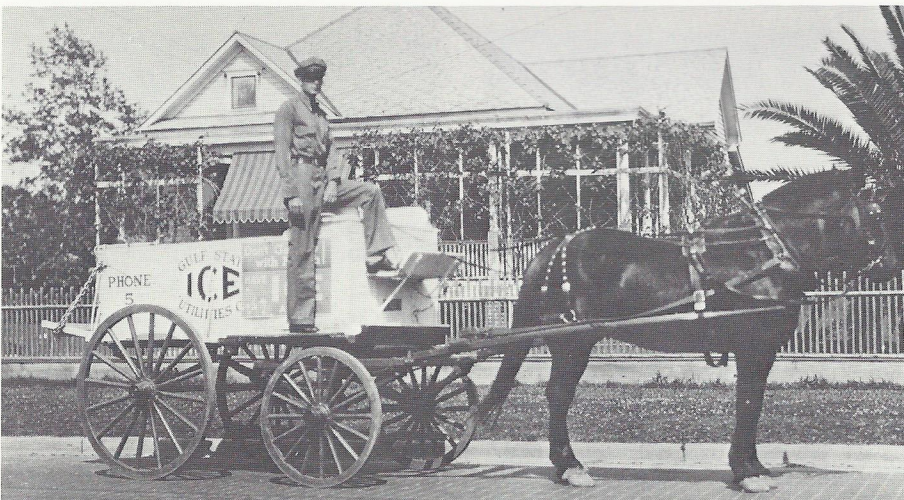
It all began with the light bulb.



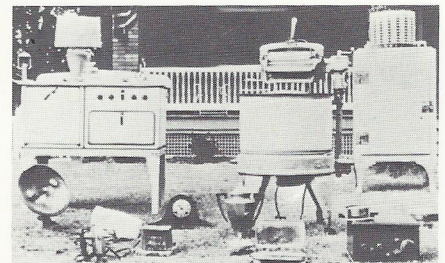
Early trolley car powered by electricity.

In the GSU system there are six interconnected electric power stations which can generate over 134 million kilowatts daily. These stations are part of five basic geographic operating divisions: The Western Division, just north of the Houston metropolis, has its headquarters in Conroe, Texas. The Beaumont Division, home of our general office, is located in Beaumont, Texas. Twenty miles to the south of Beaumont and right along the Gulf Coast is Port Arthur, Texas, home of the Port Arthur Division. The state of Louisiana is home to the two remaining divisions — the Lake Charles Division in Lake Charles and the Baton Rouge Division in Baton Rouge.

Interconnections with 32 other utility companies over a seven-state area provide a source of additional power, if needed, so that we can be assured of having sufficient power available to meet the needs and insure the reliability of service to our customers.



Ice truck making daily delivery.



Early appliances that increase the use of electricity.

These are times of rapid change for GSU, both internally and externally. Our service area, located in the heart of the Sunbelt, is prosperous and growing. The new industries entering this area bring jobs and people, which means our Company must provide the electricity to power this growth. The end of the boom is not in sight.

There are several projects that GSU has undertaken to help meet the needs of its customers.

Its Future

Linking the metropolitan areas of Houston and New Orleans, the Gulf States service area is a dynamic, growing region, rich in natural resources and industrial potential.

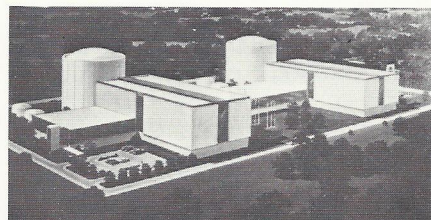
With dwindling reserves of fossil fuels we are turning our efforts to nuclear fuels for power generation. Just north of Baton Rouge in St. Francisville, Louisiana lies River Bend Station. This is GSU's first attempt at nuclear power generation. Upon completion, the nuclear facility will have the capacity to generate nearly two million kilowatts of power to the neighboring area.

In addition to River Bend Station, GSU will be utilizing the last scheduled facility designed to use either oil or gas as boiler fuel. That unit, called Sabine Unit No. 5, will have the capacity to produce 480,000 kilowatts of power.

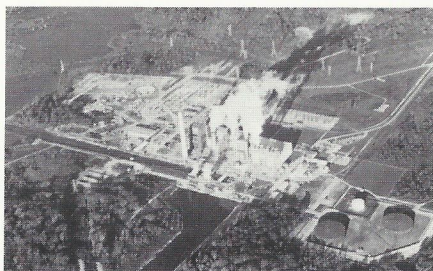
Roy S. Nelson Station, located near Lake Charles, Louisiana is the site of two additional generating units — Units Five and Six — which will be coal-fired. These will have a total generating capacity of 1,000,000 kilowatts.

The development and usage of generating equipment is not the only way GSU is serving its customers.

Recently we opened a pair of offices each called "The Energy Store" — in coordination with the National Energy Watch Program. Each "Energy Store" is located in a major shopping mall and designed to provide customers with information and advice that can improve energy efficiency of their homes and other buildings.



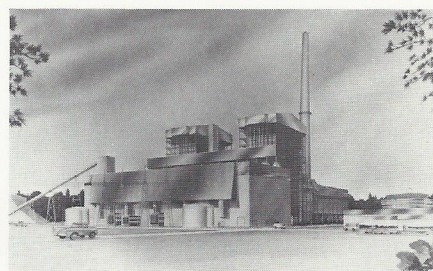
River Bend Nuclear Power Plant, designated starting date - 1985.



Sabine Station — Sabine No. 6 — oil or gas fired unit designated starting date - 1980.



"Energy Stores" provide customers with information that can make their homes more energy efficient.



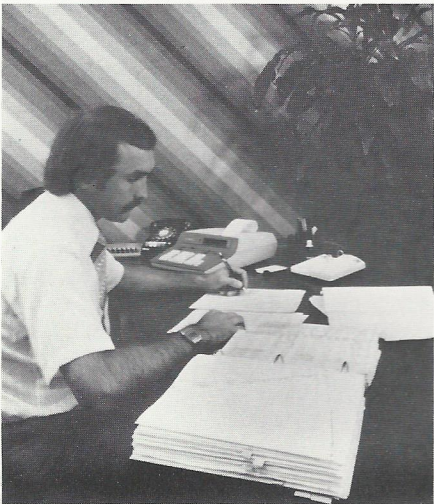
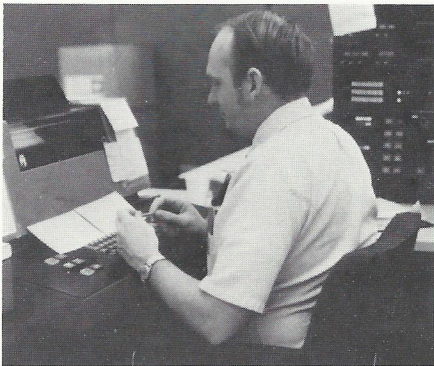
Nelson Coal — Roy S. Nelson Coal Units — No. 5 designated starting date - 1982; No. 6 - 1985.

For your first job, what could be better than utilizing all your educational training in a position that offers a challenge and a chance to grow — in short, a rewarding future?

That's what Gulf States Utilities Company has to offer a college graduate.

No matter what area of the Company you enter, your desire to express ideas, identify and solve problems, and advance will always be encouraged through the GSU system.

You and GSU



If your major is engineering, computer science or accounting, GSU can offer you professional growth and job satisfaction.

Those areas that utilize the engineering disciplines are Transmission and Distribution Engineering, Engineering and Construction, as well as Production.

Career Opportunities

Just as you're looking for the best company, we are looking for the best people. Why? We feel that every job at GSU is vital since modern society is dependent upon our services for comfortable and convenient living. As a Company, we must strive to maintain those services.

Through providing dependable service at fair prices for many years, our Company has established a good reputation with our customers.

As an employee of Gulf States, it would be your responsibility to help maintain and improve that reputation.



As a computer science major, you will find a varied diet of challenges to enhance your special skills and background. Consider employment in GSU's Information and Data Services Department.

As an accountant, you naturally have a different outlook on life. You're an organizer, an analyzer, and a budgeter, so you see your surroundings from a very special viewpoint.

At GSU, we offer the beginning accountant a variety of ideas by which to display abilities and pursue career objectives.

Engineers at GSU have challenging, growth-oriented careers. If you enjoy the challenge of planning, design, and field engineering, we have opportunities for you in Transmission and Distribution (T&D).

Bill Alt and Charles Wiesser, like many of our T&D engineers, plan in accordance with the short- and long-term needs for power generation, transmission lines and substations within the GSU system. Their work also includes planning for the necessary expansion of our relay, telemetry, and communications equipment to properly control the power system.

Transmission and Distribution



Bill Alt and Charles Wiesser review plans on a new substation.

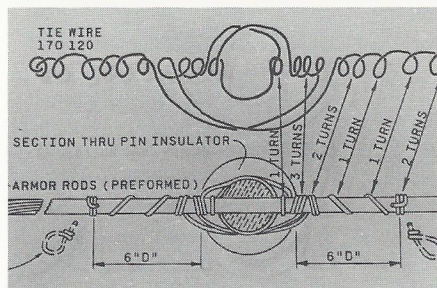
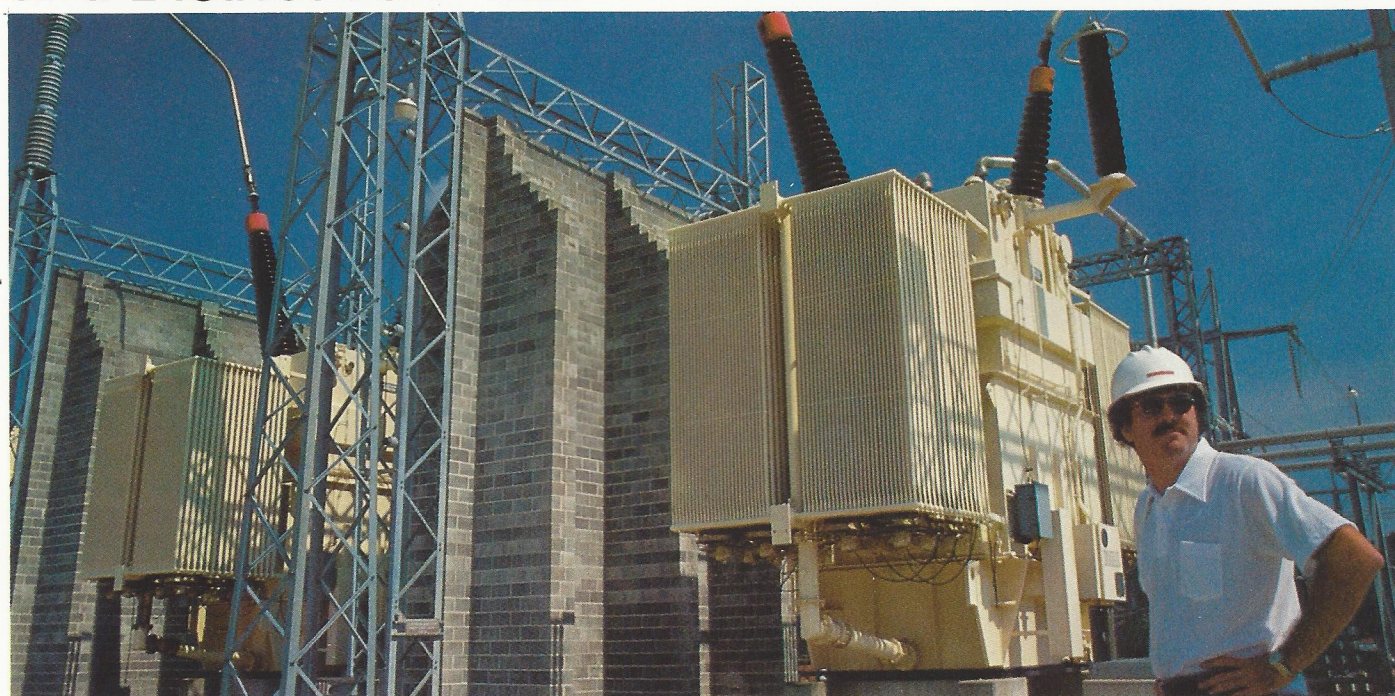
Bill Alt checks the expansion of the new Hartsburg substation.

Each of our planners uses various computer programs to simulate the power system under normal, contingent, short circuit and transient conditions.

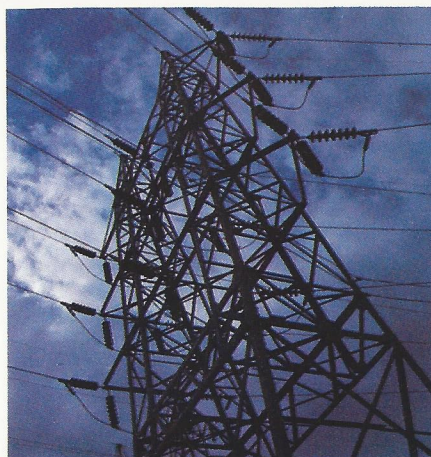
T&D engineers also design protective relaying schemes and supervisory control systems to protect and control transmission lines, substations, distribution lines and other sophisticated equipment. They study successes and failures of equipment, as well as analyze steel tower criteria, substation layouts and many other challenging projects.

Field engineers deal with the size and loading of distribution substations, feeders and transformers, feeder voltages, and customer service.

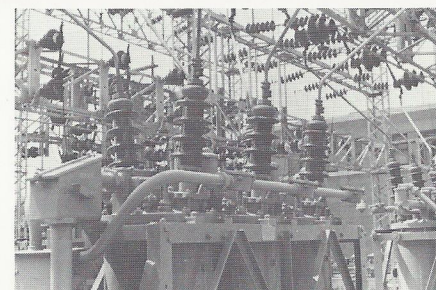
This portion of our engineering team is made up of graduates in electrical, mechanical and civil engineering.



T & D Engineers also design protective relaying schemes.



Analyzing steel tower criteria is one of many challenging projects.



An oil circuit breaker is a big part of the distribution system at GSU.

Engineering and Construction

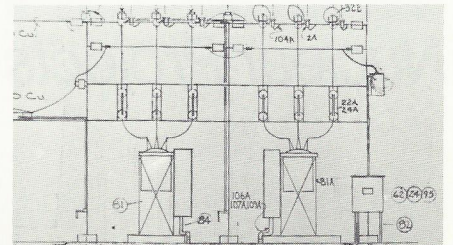
The Engineering and Construction groups provide the technical knowledge, planning, scheduling, design and work-in-progress assistance needed to maintain reliable electric service and ensure preparedness for future needs.

Many construction projects are underway in an effort to achieve optimum timing of GSU's generating facilities to meet anticipated needs.

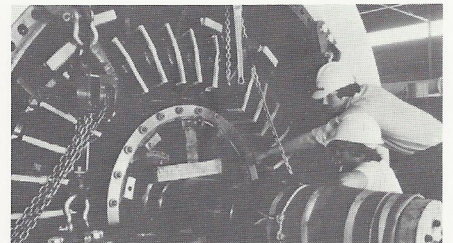
Our industry is capital intensive and it is estimated that by 1990 our actual physical plant investment will have doubled to more than \$2 billion. GSU will be generating electricity from coal, as well as nuclear plants.

Specific areas in the Engineering and Construction group are Power Plant Engineering and Design, Nuclear Projects and Fossil Projects.

An engineer checks over the rotor from a large turbine.



Engineers must select proper components.

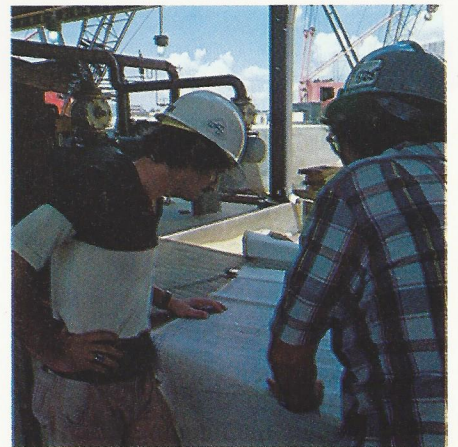


Turning designs into reality is exciting.

This department focuses on the actual generating facilities that utilize gas, oil, coal and nuclear fuel to produce power. Assignments within this department include the selection of components to arrange and provide the engineering of power plant systems. The goal is to integrate those systems into a central power generation station.

Power Plant Engineering and Design

An engineer in this department could be involved in designing computer instrumentation and controls, turbine generation equipment, or a variety of mechanical or electrical power systems. This provides technical support for GSU's power plant projects, in addition to the excitement of turning plans into reality by transforming controls, cables, concrete, steel, piping, pumps and other equipment into an operating power plant. Nuclear, coal, and lignite fueled plants are to be constructed in the next 10 years. Direct involvement, challenge and fulfillment can be yours by participating in power plant construction at GSU.



Construction is underway on several large power plants.

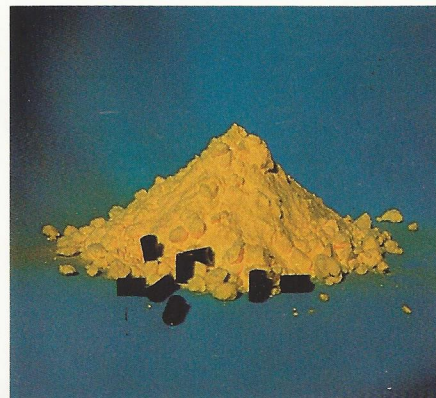
The completion of the nuclear power plant located near Baton Rouge, Louisiana, will take GSU into the nuclear age. The architect/engineering firm for the project is Stone and Webster. General Electric provides the heart of the project with a single-cycle, forced circulation, boiling water reactor (BWR/6) which is designed to generate 934,000 kilowatts of electricity to serve the growing industrial, commercial and residential needs of GSU's customers in South Louisiana.

Nuclear Projects

River Bend Station represents the largest single investment ever made by Gulf States Utilities Company. It is among the largest construction projects ever undertaken in the state of Louisiana.

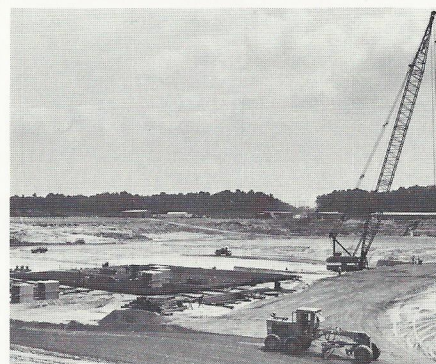
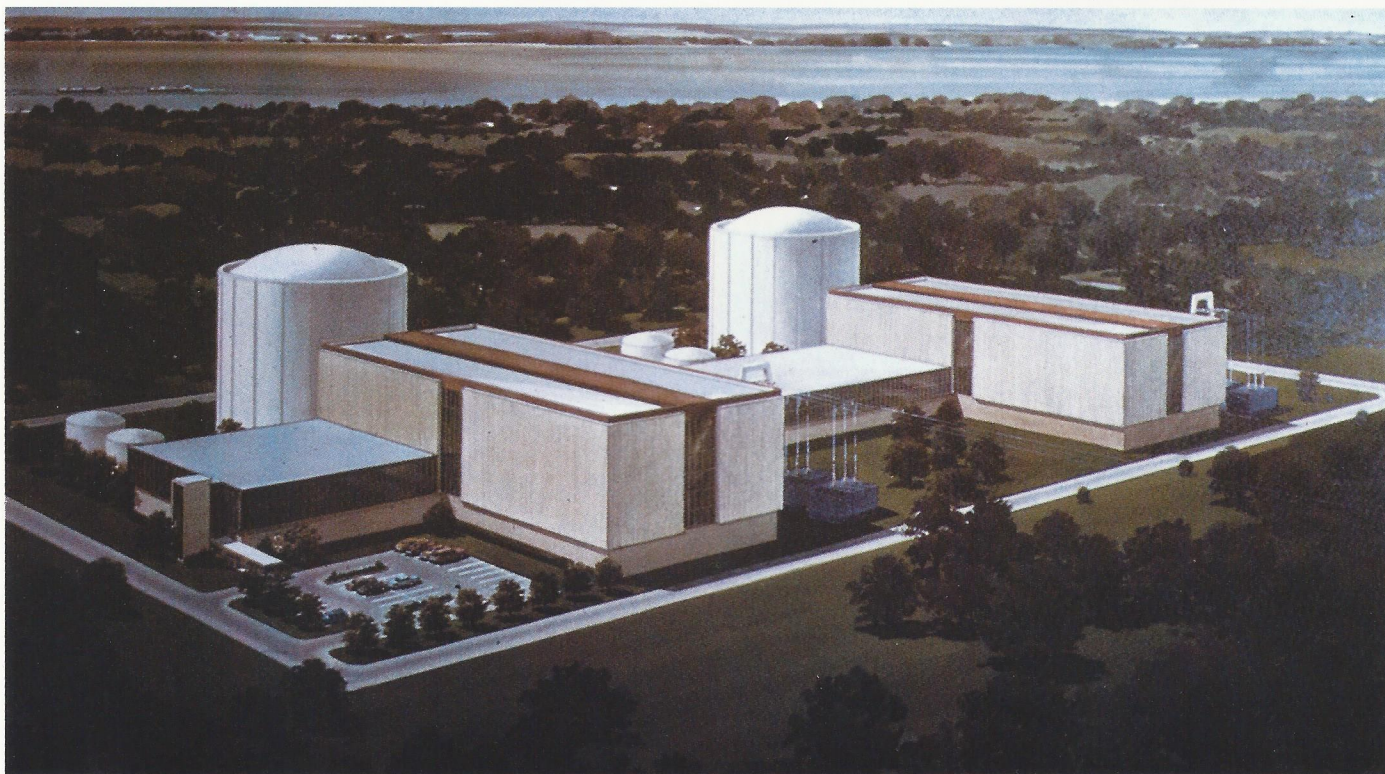
Positions in this department include responsibilities in the areas of core engineering, nuclear fuel procurement and management, technical training with architect/engineer firms, economic studies, optimum fuel cycle strategies and nuclear core follow-up maintenance, to name just a few.

The three departments included in the Engineering and Construction group utilize the Mechanical, Electrical and Civil/Structural Engineering disciplines. Persons holding construction management, environmental sciences and physics degrees can also be utilized in these areas.



Nuclear fuel procurement and management is essential to the River Bend Project.

River Bend Nuclear Plant, first GSU nuclear plant has the capacity to generate 940,000 KW.

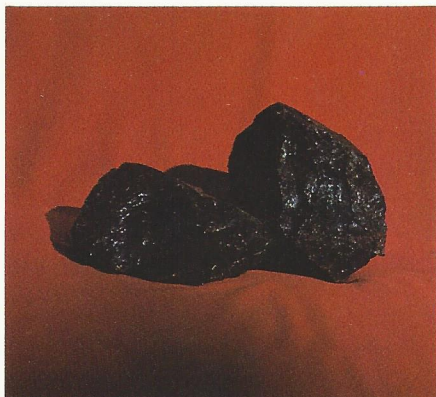


River Bend under construction.

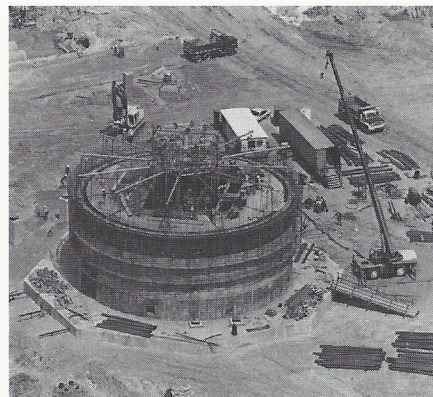
GSU now utilizes natural gas and oil as its primary boiler fuels. With the River Bend nuclear project and the Nelson Coal project, GSU will become less dependent on the present oil and gas fuels.

Nelson Unit No. 6, near Lake Charles, Louisiana is planned for completion in the early 1980's. It will be a 540,000 kilowatt coal-burning unit, with Unit No. 5 to follow in two years. These projects, along with future lignite-fired plants, comprise the immediate tasks of our Fossil Projects Department.

Fossil Projects

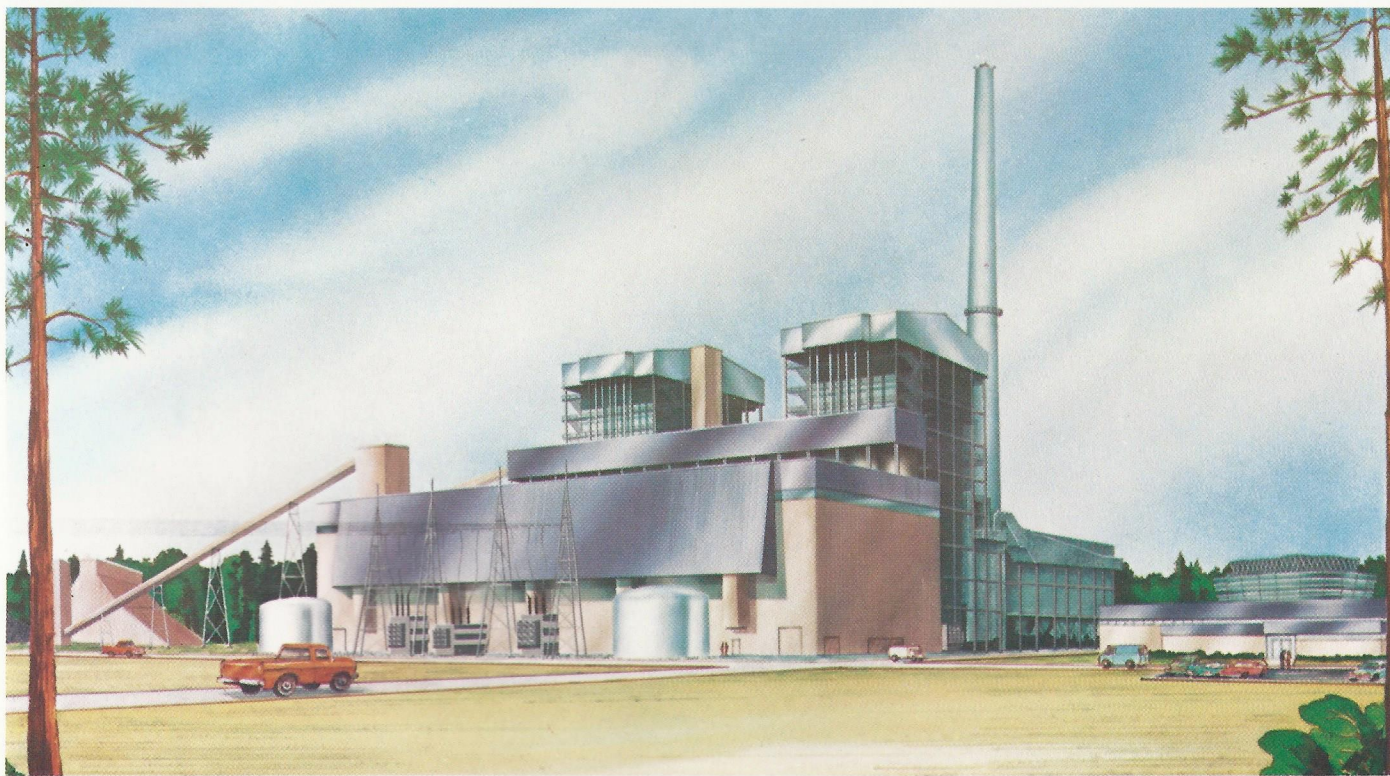


The use of coal will make GSU less dependent on other fuel sources.



Nelson Unit under construction.

Roy S. Nelson No. 5 Coal Fired Unit — generating capacity, 540,000 KW.



The need to generate electricity reliably and economically calls upon the innovative application of engineering to thermodynamic efficiencies, instrumentation and controls.

Engineers in this department have an opportunity to learn the operation of a complete electric generating facility and to progress into an area of responsibility concerned with overall plant performance.

Production Department

Your assignment would include work in any one of six generating stations or in a staff function assisting several plants.

You would be involved in studies of turbines, generators, condensers, electrical switchgear or other associated pieces of sophisticated equipment needed to obtain maximum efficiency and reliability at these multimillion dollar sites.

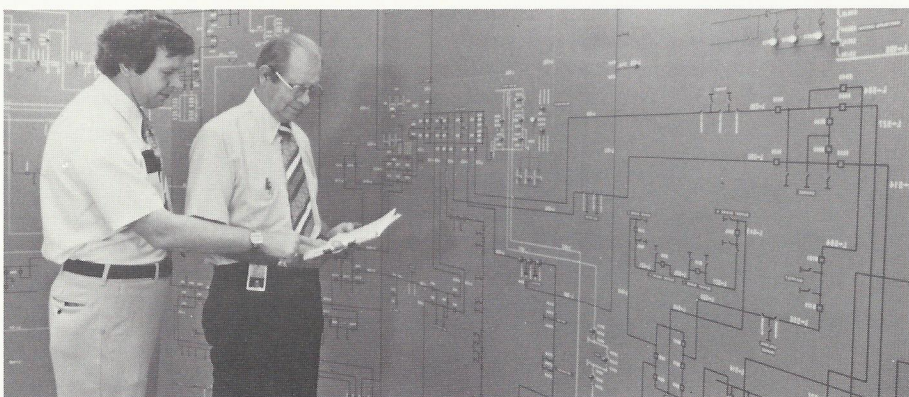
If you choose to work in production, career opportunities could allow you to eventually become a plant manager with responsibility for a plant's total operation.

This department utilizes the skills of electrical and mechanical engineers who are highly motivated and enjoy the challenges involved in maintaining optimum efficiency at generating plants.



Sophisticated equipment is used to maintain maximum efficiency.

Production Engineers are involved in operation of complete generating facilities.



Managing controls and instrumentation is a big responsibility.

Accounting at Gulf States Utilities offers opportunities for growth and rapid advancement typical of a billion-dollar corporation. If you are creative and ambitious, you can make rapid progress through various assignments in utility accounting.

Accounting Services

Discussions on corporate finance provide an intriguing area for qualified individuals.

With a degree in accounting (or a degree in general business, economics, management or finance, with a minimum of 12 hours in accounting), an individual can qualify for a challenging position in one of the following areas: taxation, budgeting and control, plant and depreciation accounting, general accounting and regulatory reporting, oil and gas accounting, internal auditing, and the design and implementation of accounting systems.

Our current expansion and the need for innovation create constant opportunities for individuals who are qualified to assume responsibility and have a desire to move into supervisory and decision-making duties early in their career.



Accountants gather to confer on company accounting procedures.

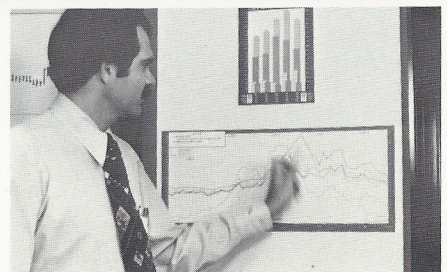


The Financial Services Department, due to the intense construction program undertaken by GSU, has recently been expanded to provide for greater contact with the financial marketplace.

Financial Services

We are constantly seeking, developing and implementing new methods of financing at Gulf States Utilities. The challenge to maintain and strengthen our financial base is a demanding, yet intriguing area for the qualified individual who is interested in financial analysis. This area offers responsibilities and growth for persons interested in corporate finance.

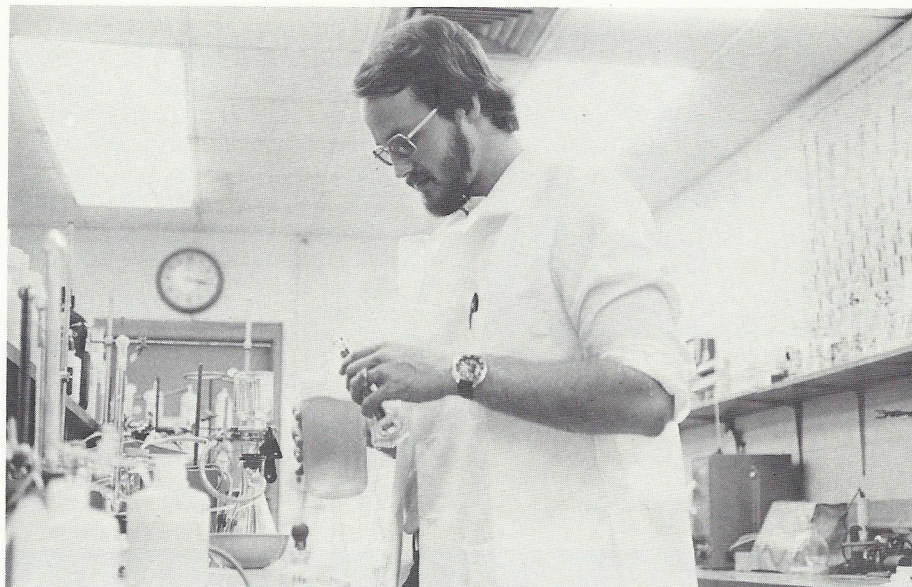
If you hold a Bachelor's or Master's Degree in accounting, economics, finance or management (with 12 hours of accounting), then you should consider our Financial Services Department.



Analysis is a big part of the responsibilities of the Financial Services Department.

These professionals provide technical support to all generating stations with problems caused by fuel supply changes and the addition of complex air and water treatment systems. They conduct tests to determine the most efficient and economical methods of operating these waste treatment facilities. The use of liquid and solid fuels requires the establishment of a fuel testing program to confirm fuel contractor compliance and furnish data on fuel quality. Sampling liquid and gaseous emissions from power stations determines compliance with applicable federal and state permit requirements.

Chemistry and Environmental Science



Samples of power plant emissions must be tested regularly.

This functional group provides services for total corporate requirements in computing.

GSU utilizes state-of-the-art hardware consisting of an IBM 370/158 central processing unit and current disk and tape peripherals. We attempt to stay current on versions of control software. We utilize the virtual storage operating system for overall system control and the information management system for data base and data communications capabilities. We have other separate computer systems which are used for special applications.

As a professional in this group, you would probably begin as a systems analyst. You would receive specialized training at a highly accredited school prior to specific job assignment in either Application/Technical Development, Systems Development or Data Administration. IDS utilizes the skills of math, computer science, or engineering graduates.

Information and Data Services

Computers and computer systems are kept current at GSU.



Wherever you might settle within our service area, you'll find more than just a job.

You'll find a great place to live — a location with a pleasing climate and lifestyle, where both the pace and the people are relaxed.

Because of the mild, semi-tropical climate, there is year-round access to outdoor activities.

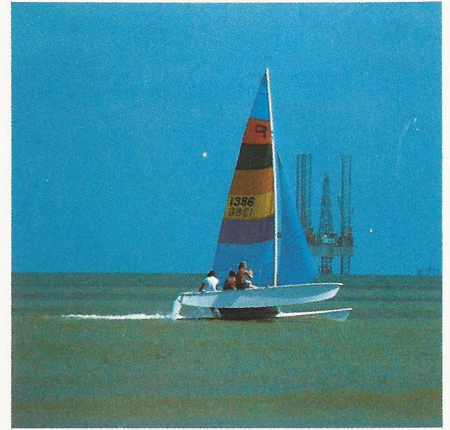
Numerous rivers, lakes and reservoirs along the upper Texas-Louisiana Gulf Coast provide great freshwater fishing, in addition to the bounty of the Gulf of Mexico.

Boating, waterskiing, sailing and swimming are enjoyed at any one of many nearby lakes or Gulf beaches.

In addition to water sports, the region offers indoor and outdoor tennis, golf, motorcycling, rodeo, camping and picnic facilities.

There are acres and acres of forest and marshland — paradise for a duckhunter or deerhunter.

For indoor entertainment, choose a seafood or cajun-style restaurant, or one of the many fine theatre productions, symphonies or concerts available throughout the area.



The Gulf Coast provides plenty of warm weather fun and relaxation.

Quality of Life



An early morning at Toledo Bend Lake. Toledo Bend is one of two large, fresh water lakes famous for fishing and camping.

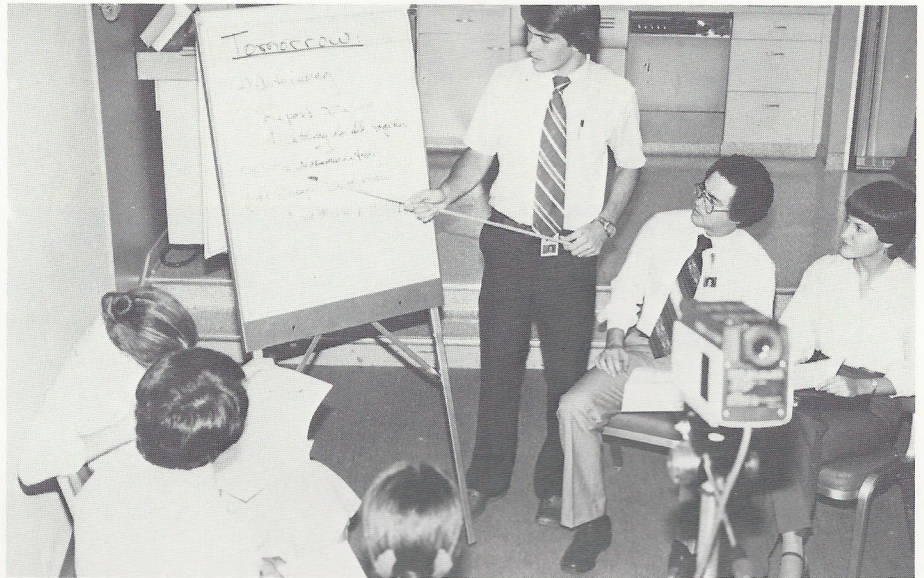
What GSU Will Provide

Training for our professional employees is not a rigidly organized program, but is based on individual needs. Your own program might include seminars, vendor-sponsored training sessions, workshops developed by professional organizations or reimbursed correspondence courses and academic study.

Training

During your initial period of employment, we'll give you assignments through which you can demonstrate your abilities and your potential for assuming more responsibility. The on-the-job learning experience is vital to the development of an individual. Through exposure to problems we learn to recognize and prepare ourselves to solve them.

We believe the individual who can recognize and meet these challenges will find work a rewarding experience at Gulf States Utilities.



Training may include special workshops.

As an employee of Gulf States Utilities, you can participate in benefits packages that are competitive with those within our industry.

They include a salary equal to or better than those in similar industries, as well as nine paid holidays, including one for your birthday. Your vacation package begins with two weeks off after one year of service, three weeks after nine years, four weeks after 18 years and five weeks after 27 years of service.

The Company offers a merchandise financing plan that allows the employee, after one year of service, to purchase certain electrical appliances from approved dealers. Each employee's merchandise account may accumulate to \$2,000 with only a \$5 bookkeeping charge and no other interest or carrying charges assessed.

Benefits

We encourage our employees to further their professional education by providing them with an educational assistance program. This program is designed to provide employees with at least one year of service with financial assistance while they further their education.

The geographic location of our divisions places our employees in close proximity to several major universities where they can take advantage of the educational assistance program. The Beaumont and Port Arthur divisions allow employees to utilize the facilities of Lamar University. The Western Division, just north of Houston, allows employees to attend the University of Houston or Texas A&M University in College Station, Texas. Louisiana employees assigned to the Lake Charles Division have McNeese State University, while Baton Rouge Division employees can utilize the facilities of Louisiana State University.

Each of these universities has graduated many GSU employees and assists our employees in the selection of courses that can be taken on a part-time or night school basis.

GSU also has a leave-of-absence program which allows employees to leave full time employment to acquire an additional degree. It grants employees up to two years of time off in order to obtain full time student status.

This program provides for 100% reimbursement when working toward a graduate degree, with 50% refunded on a semester-to-semester basis and the remaining 50% paid when the degree is received.

Our employee benefits include group hospitalization, medical and surgical plans, group life insurance, a pension plan and business travel insurance.

There is also a thrift plan — a savings and/or stock purchase plan — whereby the Company matches 50 cents of each \$1 you contribute, up to 6% of your salary. The Company will also reimburse new employees for expenses of relocation.

Supplying the energy our customers need efficiently and economically is Gulf States Utilities primary objective. However, the success achieved results largely in our ability to attract qualified graduates from the many colleges and universities we visit.

To Apply

If what we offer matches your interest, aptitude and ambitions then meet with us when we visit your campus. We want to talk with you and discuss in greater detail the career opportunities at GSU.

If you cannot meet with us on campus then send a letter of application and resume to:

Christopher B. Fite
Supervisor of Recruiting
P. O. Box 2951
Beaumont, Texas 77704



**GULF STATES
UTILITIES COMPANY**

GULF STATES IS AN EQUAL
OPPORTUNITY EMPLOYER

