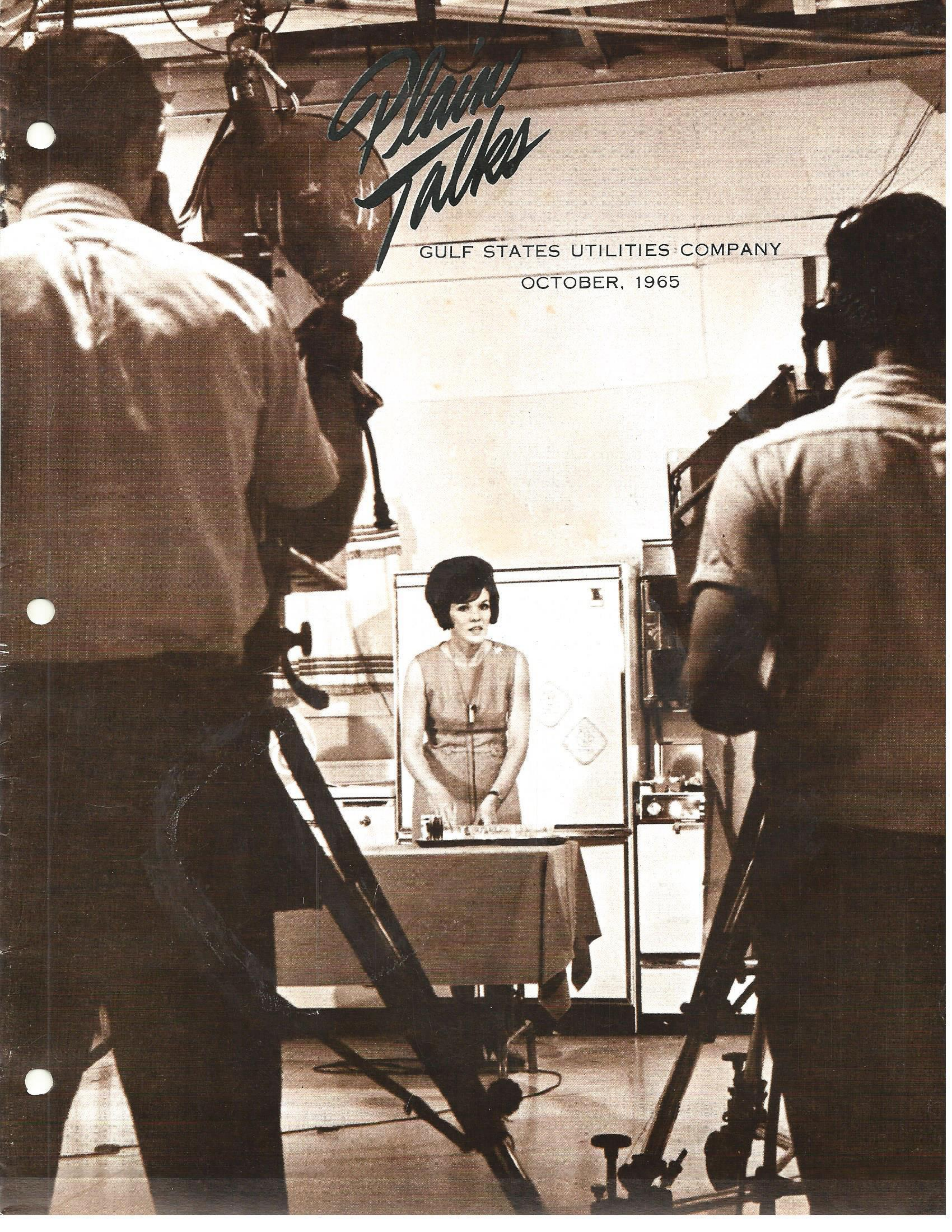


*Plain
Talks*

GULF STATES UTILITIES COMPANY

OCTOBER, 1965



James S. Turner
Editor

Bunch Eads
Associate Editor

Jack Worthy
Baton Rouge Division
Hal Reagan
Beaumont
Contributing Editors

Jack Shofner
Artist

OUR COVER

"CAMERA, YOU'RE ON JOAN!"

Joan Carter, home service advisor, Lake Charles, presents points on preparing a good schoolday breakfast on a recent edition of Glamorama on KPLC-Channel 7, Lake Charles. Glamorama, featuring Mrs. Carter as the hostess, is presented each Saturday at 11 a.m. on Channel 7. The program features food and fashion highlights and information for Lake Charles area homemakers.

Social Security Payroll Deductions Increase for Employees in January

AS OF JANUARY 1, 1966, your payroll deduction for social security is increased. Further increases in your contribution for old age, survivors and disability insurance (OASDI) are scheduled until 1987. Our Company will contribute the same amount toward your social security coverage that you are required by law to contribute.

The same increases, as shown in the table below, will apply to the contribution made toward your social security coverage. The social security tax paid by you and your employer will continue as long as you are working regardless of your age and even though you may be receiving social security benefits. If you change jobs, your social security account travels with you.

In addition to the increase in the social security tax rates, deduction will be made for the new health benefit plan introduced this year.

Year	Maximum Earnings Base	OASDI Tax Rate	Health Plan Rate	Annual Tax Paid By Employee	Annual Tax Paid By Our Company
1965	\$4800	3.625%	-	\$174.00	\$174.00
1966	\$6600	3.85%	0.35%	\$277.20	\$277.20
1967-68	\$6600	3.90%	0.50%	\$290.40	\$290.40
1969-72	\$6600	4.40%	0.50%	\$323.40	\$323.40
1973-75	\$6600	4.85%	0.55%	\$356.40	\$356.40
1976-79	\$6600	4.85%	0.60%	\$359.70	\$359.70
1980-86	\$6600	4.85%	0.70%	\$366.30	\$366.30
1987 (& after)	\$6600	4.85%	0.80%	\$372.90	\$372.90

CONTENTS

Denham Springs, Another Louisiana Town Preparing for Growth _____ 1

Our Service Area's Brush With Hurricane Betsy _____ 3

Our TV Girl _____ 6

New Lighting Contest _____ 8



Member of Southeast Texas Industrial Editors and International Council of International Editors.



CITY FATHERS PLUS ONE. It's not unusual to see our Company's local superintendent of Baton Rouge's Eastern District, R. P. (Dick) Smith, second from left, standing, in attendance at the monthly meeting of Mayor Matt Allen Scivicque, seated, and the board of aldermen. Lending assistance to city officials when needed is part of Mr. Smith's job. The city aldermen are, from left, Robin Hood, V. W. (Bill) Brignac, Joe Stafford and Dick Barnett. Absent for the picture-taking session was C. Earle Benton, who doubles as city clerk and city alderman.

Denham Springs, Louisiana, a good place to call home

WILLIAM DENHAM, a Scot who settled about a mile east of the Amite River in 1827, spotted some springs on his land one day. As fate would have it, they were mineral springs and in no time the countryside became a health resort complete with one of the finest hotels of the day.

That was the beginning of Denham Springs, Louisiana, located amidst the timber belt of picturesque Livingston Parish in Southeast Louisiana.

Today, the community claims upwards of 8,000 citizens and ranks as one of Louisiana's key smaller cities for multiple reasons. For starters, there are its excellent location five miles east of Baton Rouge on U. S. Highway 190, ample fresh water, electric power, raw materials, abundant labor supply, tax structure that appeals to industry, trade area that encompasses 15,000 people and enthusiastic civic leaders with foresight and imagination.

Under the latter comes the Livingston Redevelopment Association, Inc., an energetic, non-profit corporation working for the economic development of Denham Springs and Livingston Parish. Headed by Jack C. Odom, executive vice president and cashier of the Livingston State Bank and

Trust Company at Denham Springs, the economic rehabilitation task force was formed in 1963 for the purpose of attracting new businesses and pumping life into old ones.

IT'S A FLEDGLING organization as years go but the Livingston Redevelopment Association can already point to some of its successes in creating new payrolls. It was responsible for bringing in Vulcan Foundry (municipal castings, 50 employees), Grant-Lehr Corporation (ready-built paneling, 40 employees) and Southern General Adhesives, Inc., (glues manufacturer, seven employees).

And, with the association's support and encouragement, two already-established Denham Springs firms are enjoying record operations thanks to an expansion and reopening. McIntyre Veneer Manufacturing reopened for business and Delta Concrete Company has 50 employees busy on a production schedule beefed up about two years ago.

More growth is imminent and the community is intent on sprucing up to become more appealing to prospective industry. The citizenry is aware that a pleasant community with its share of churches, good schools, civic leadership, etc., catches the eye of plant-site seekers.

Citizens rallied to the cause a year ago by voting a \$1 million bond issue to trigger construction of a city-wide sewer system serving every resident.

(Continued on next page)



NEW MILLION DOLLAR HOSPITAL. Thanks to voters' approval of a bond issue, Denham Springs and Livingston Parish have their first hospital in history. Built in Denham Springs, the \$1 million Dixon Memorial Hospital was dedicated only last summer.

(Continued from page 1)

Denham Springs is modernizing its schools as needs arise, the city has an organized recreation program for young and old and, unlike many small towns, has house-to-house mail delivery. Three of the state's largest colleges, Louisiana State University, Southeastern Louisiana State College and Southern University, have daily bus service between Denham Springs and their campuses.

Another asset is the city's close-knit Chamber of Commerce headed by Dr. Jerry Henderson, the 1965 president. Weekly luncheon meetings have proved invaluable in keeping Denham Springs' growth efforts united and well-organized.

A MUNICIPAL GOVERNMENT headed by Mayor Matt Allen Scivicque must rate as one of the finest — and businesslike — small town administrations around. Keen management of city affairs and facilities has enabled the municipality to operate without a tax increase for the last 25 years. And, as Mayor Scivicque is quick to point out, residents and industry are paying only a minimum of seven mills now, which is earmarked for the maintenance of the city government.

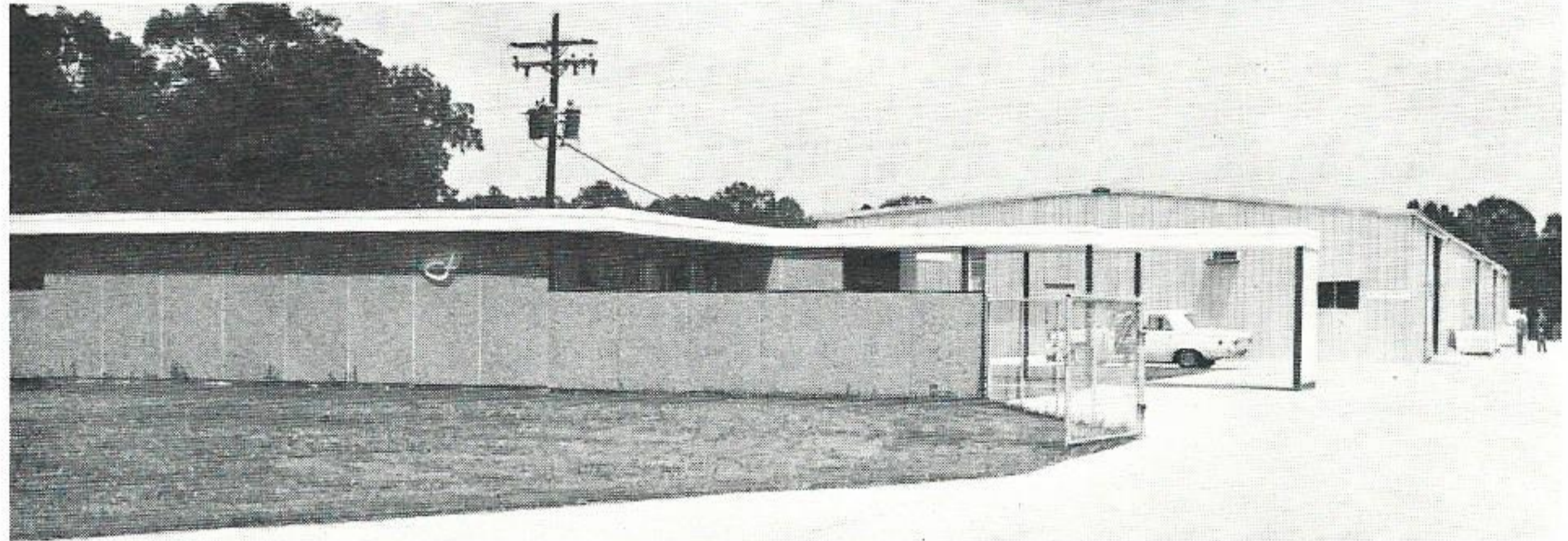
Joining Mayor Scivicque in calling the shots is a board of aldermen made up of Dick Barnett, C. Earle Benton, V. W. Brignac, Robin Hood and Joe Stafford. Mr. Benton doubles as city clerk.

The municipal administration, employer of 50 workers including a paid five-man fire department and a 10-man police department, is moving through 1965 on a budget of \$625,600 — a far cry from 1958 when scheduled expenses were \$241,137. It's indicative of the steady growth Denham Springs is experiencing.

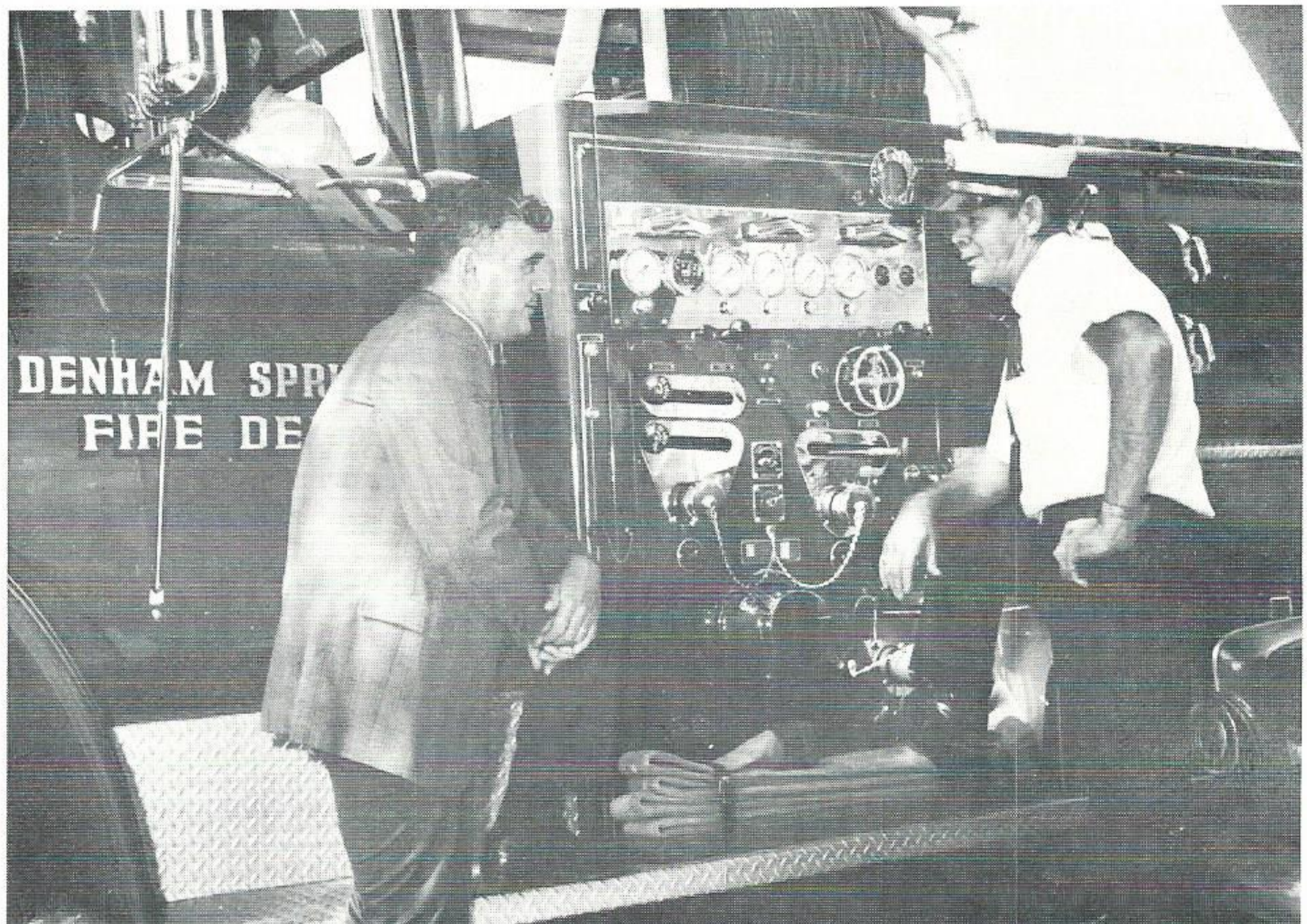
It all adds up to good spot to call home, which is what more and more Baton Rougeans are discovering by the day. Gracious homes in peaceful, tree-shaded small town surroundings, coupled with excellent highways to the heart of the capital city, have proved a catalyst to a community bent on becoming one of Louisiana's most progressive.



MODERN SCHOOLS. Denham Springs citizens point with pride to their schools, all of which had recent expansions to stay up to date scholastically and in classroom space. The high school, above, which has 711 students in the top four grades, will have a new library ready for use within a month.



NEW PLANT, NEW PAYROLLS. Grant-Lehr Corporation, a ready-built paneling manufacturer, is one of three new plants attracted to Denham Springs through the efforts of the Livingston Redevelopment Association, Inc. Others are Vulcan Foundry and Southern General Adhesives, Inc. Grant-Lehr employs 40 workers.



A GOOD TEAM IN TIME OF NEED. Our Company's Dick Smith, local superintendent at Denham Springs, chats with Fire Chief Wilford Spring while looking over the city's new \$45,000 fire engine. When a fire hits an area where electric lines are involved, GSU'ers and the fire department work together as a team to prevent injuries. Chief Spring's paid five-man department, coupled with the new truck and renovated fire mains, give the city its best fire protection in history.



DRY ICE FOR HURRICANE'S VICTIMS. To help our customers preserve their perishables while service was knocked out in the Baton Rouge area our Company gave away 185,365 pounds of dry ice. The dry ice had to be shipped in from Memphis. Here the ice is being given away in 25 pound lots to customers who waited in lines Saturday, September 11, and Sunday, September 12.

THAT WAS NO LADY: THAT WAS HURRICANE BETSY!

. . . season's second storm knocked out 100,000 customers in Baton Rouge Division and Lafayette District . . . did millions of dollars of damage to our system . . .

IT IS NOT POSSIBLE to evaluate at this time the extent of damages to the electrical system of Gulf States Utilities Company within the 40-mile radius of Baton Rouge. The whipping effect of winds, up to 100 miles per hour, have caused heavy damage to both transmission and distribution facilities throughout the entire area. At the height of the storm—about 3 a.m.—some 90,000 homes and other services were without power . . .”

There was more to this bulletin released to the press at 7:30 that Friday morning, but this was the worst of it. Hurricane Betsy sat on the Baton Rouge area for several hours the night of September 9 and 10. When she had passed, our Company's electrical system was left a cripple.

By early morning the worst was over and the clean-up began. Extra help was also arriving. Gulf Staters came from Beaumont, Port Arthur, Navasota and Lake Charles Divisions. Others came from Houston Lighting and Power, from Southwestern Electric Power in Shreveport and Central Power and Light Company in Corpus Christi and Victoria.

Still other contract crews came to help clear the trees and repair the broken poles and lines from as far away as Oklahoma, Florida and New Mexico.

In all, some 1,350 men and women, including Baton Rouge Division personnel, worked 16-hour schedules and longer for almost a week patrolling lines, clearing trees and limbs, answer-

ing trouble calls, replacing broken poles and damaged electric equipment and numerous other vital assignments.

EARLY ESTIMATES were that “Betsy” was from two to ten times more destructive than “Hilda”. But before the final, official count is made—everyone agrees that although the devastation was far more reaching than any other storm of its type to hit the area before, Hurricane Betsy could have been even more costly—in lives and property—than she was.

The monitoring of weather reports began early Thursday morning, even though the Weather Bureau expected Betsy to go into Texas. By 2 p.m. that day, emergency procedure plans were put into effect. The call went out for extra repair crews. The assembly of additional replacement materials was begun. Arrangements were made for food and lodging of out-of-town crews. Specific assignments were made to handle trouble calls, the patrolling of lines and restoration of service.

By 8 a.m. Friday, the count-down had begun. Of the 90,000 customers who were out of service at the height of the storm, some 10,000 had been restored. By midnight Saturday, 65,000 services had been restored and by midnight Sunday, approximately 81,000, or 90 per cent, were back on the line. Twenty-four hours later the number of homes still without power had been reduced to 5,000. Power was restored to almost all homes by the following Friday, except for some scattered throughout the area. Most of these were unable to take power until electricians had made necessary repairs to the individual services.

Although total figures were not available at the time, the count on Friday morning, September 10, went like this: 488 poles to be replaced, 80 substations out of service, 53 transmission lines and 156 distribution circuits out.

BATON ROUGE DIVISION was not the only portion of our system to receive damage from Betsy. Winds reaching out from the storm center cut off service to more than 10,000 customers in the Lafayette District of the Lake Charles Division to the west.

(Continued on next page)

(Continued from page 3)

Winds had knocked out some 20 structures in the district. But quickly 110 men and women from the Lake Charles, Jennings and Lafayette Districts went to work and by 8 p.m. Friday all but 4,500 services were restored. By dark Sunday all service in the area had been restored except for some isolated rural homes. All restoration work in the Lafayette District was carried out by GSU crews—no outside contract crews were needed.

After the major portion of the damage in the Lafayette District was cleaned up to a point where the local Gulf Staters could complete restoration of service, 37 Gulf Staters from Lake Charles and Jennings were dispatched to Baton Rouge on Monday morning to assist crews already there in restoring service.

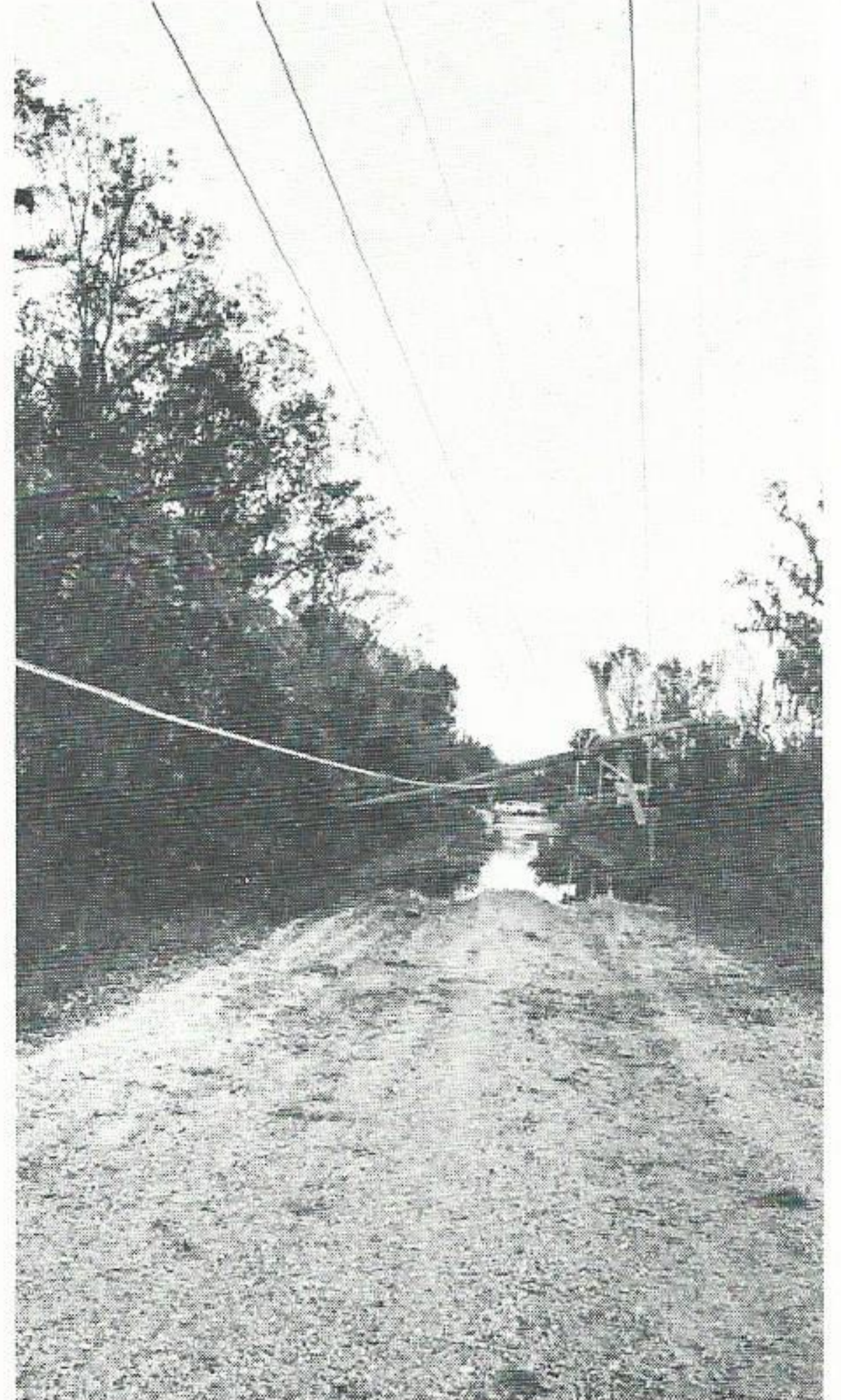
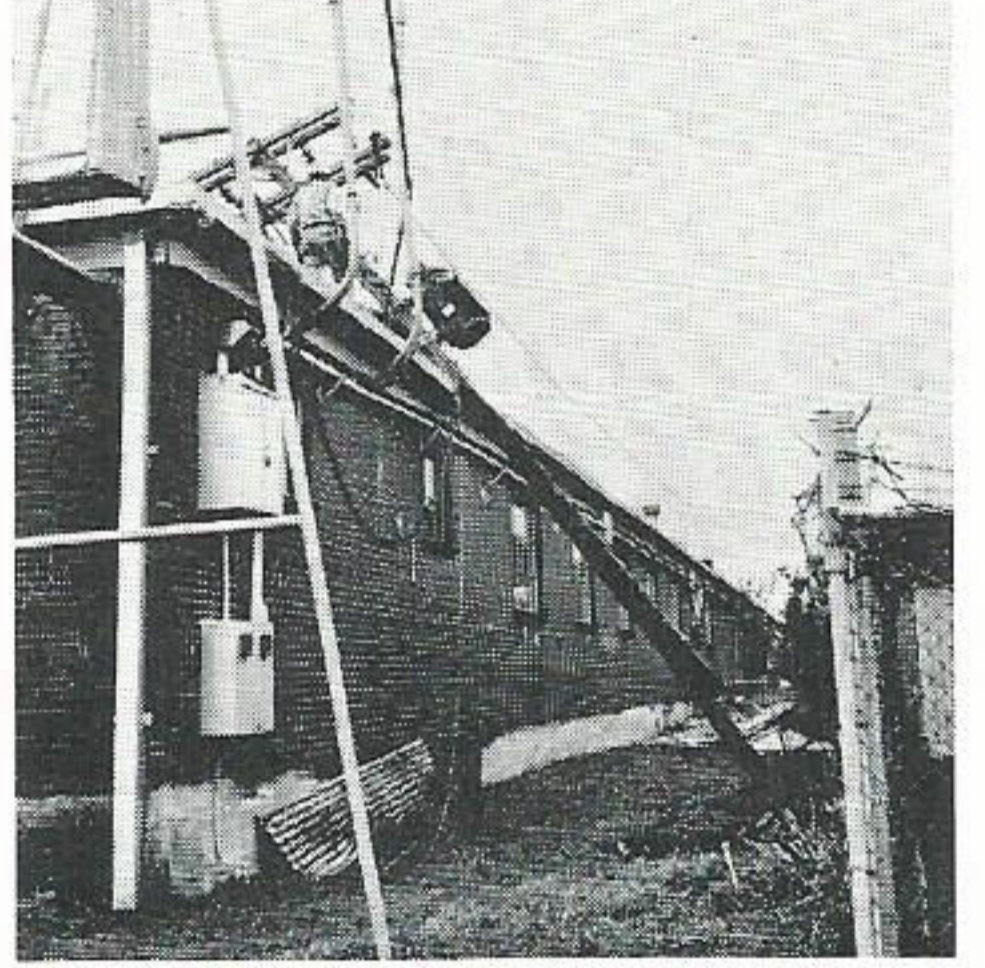
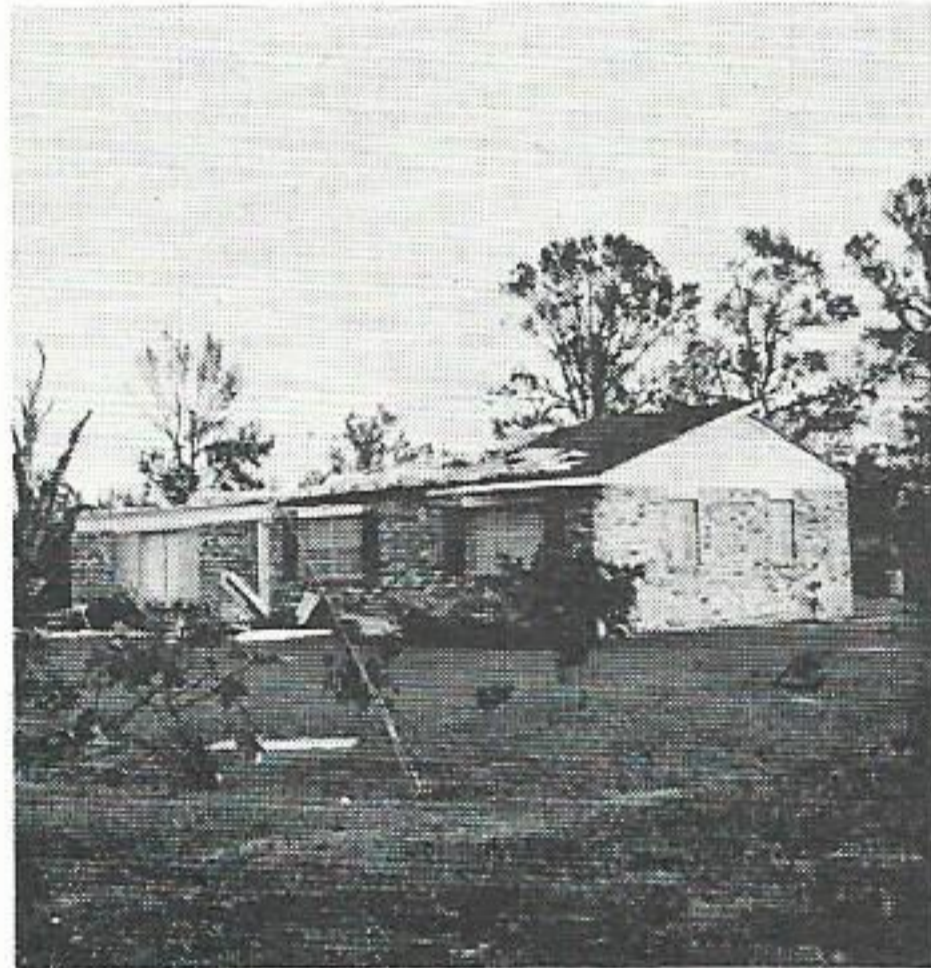
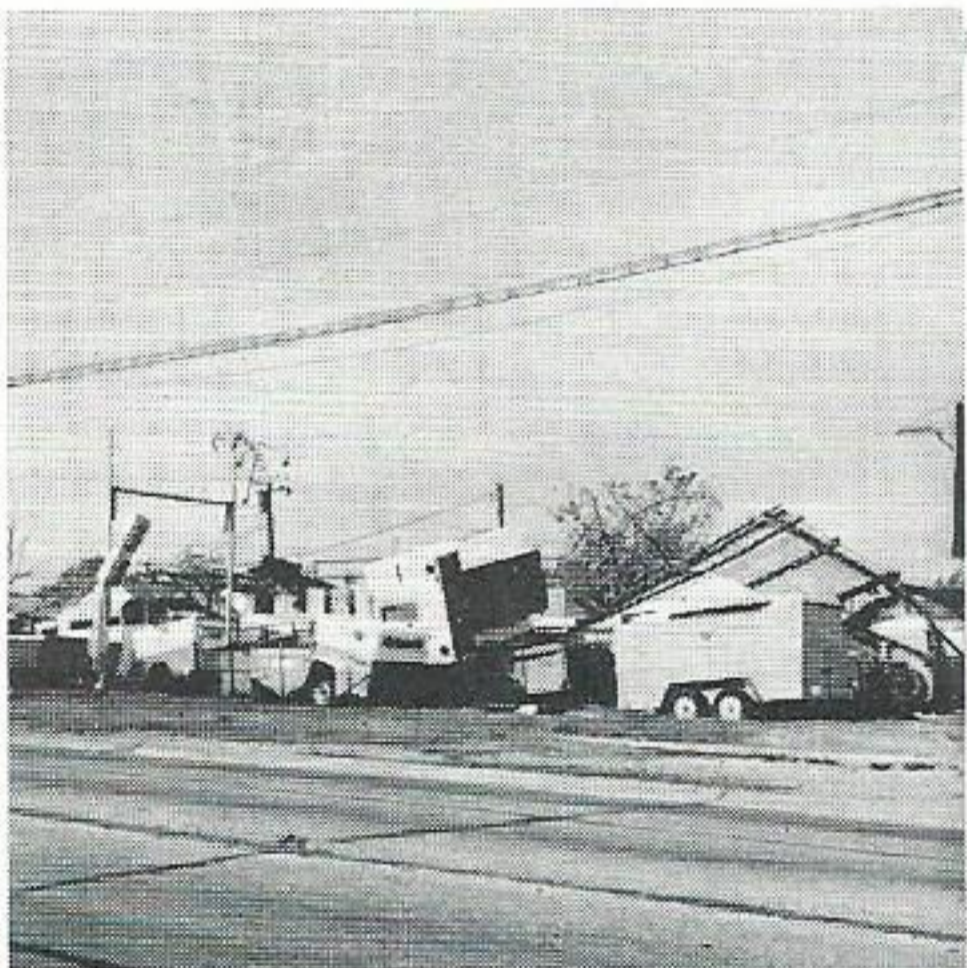
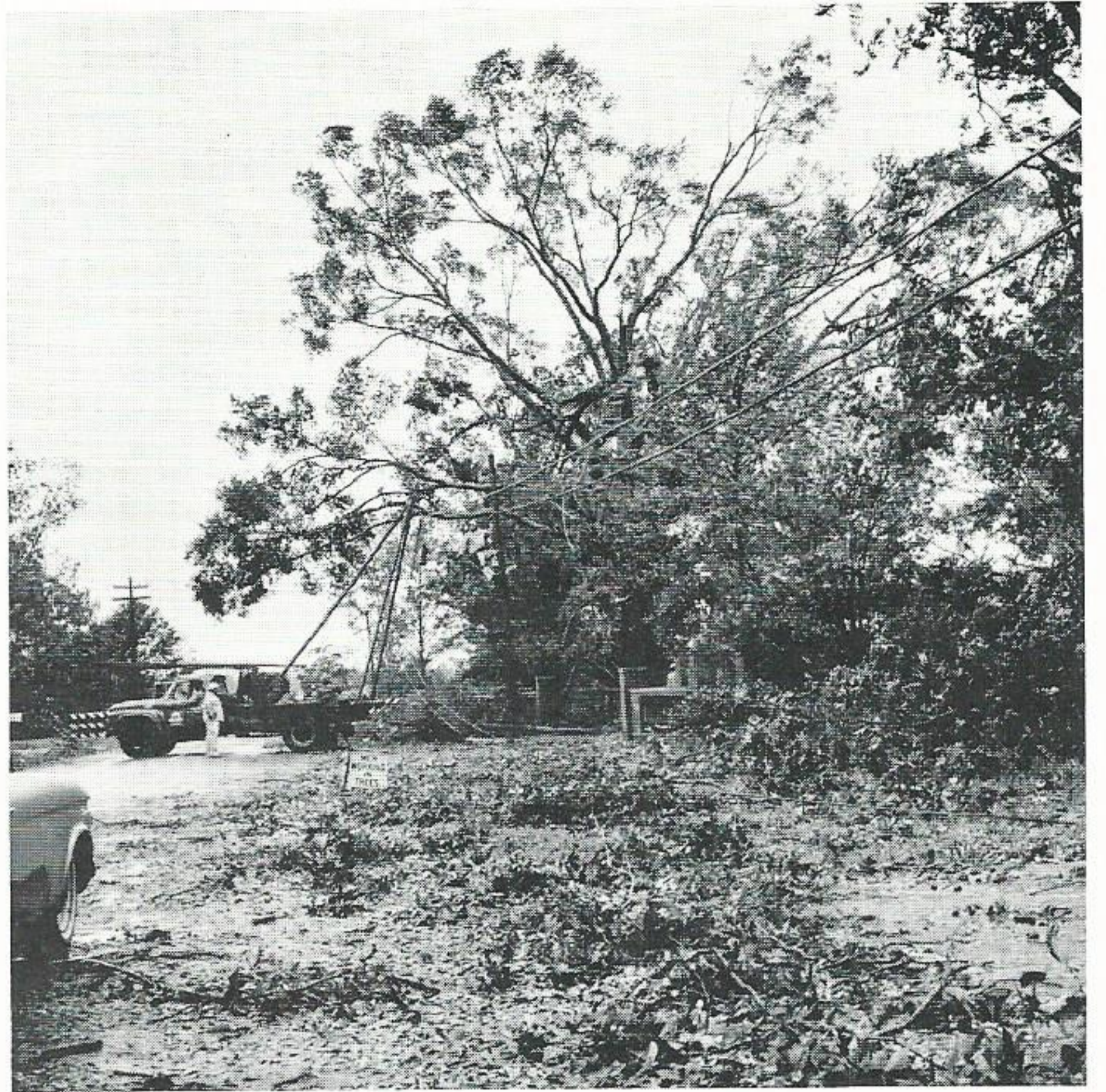
TO HELP PRESERVE the perishable products and food of thousands of our customers while repairs were being made, arrangements were made with a local distributor to have dry ice shipped in from Memphis. A total of 185,365 pounds of ice was given away in 25-pound blocks as the shipments arrived in Baton Rouge Saturday and Sunday.

The many letters, cards, telephone calls and personal expressions of congratulations and appreciation from the customers of Gulf States attest to the tremendous job well done.

A Baton Rouge State Times editorial, referring to Gulf States and other private enterprises said: "What such organizations do during such disasters to keep operations to normalcy, is a marvel of organized thinking and applied energy."

Betsy was born 400 miles out in the Atlantic Ocean east of the Windward Islands. She brought death to man and beast. Ravaging the country of South Louisiana, she destroyed homes and businesses, wiping out the life savings of some and leaving scars that will last a lifetime. Some referred to her as a lady. But Betsy was no lady! Betsy was a terrible force that only the very young will ever forget.







IT'S ALMOST SHOWTIME. Joan Carter, home service advisor, Lake Charles, and Rosalie James, Lake Charles demonstration kitchen, check last minute details for a Thursday video taping of Glamorama, a 30-minute TV show Mrs. Carter does for KPLC-TV, Channel 2, in Lake Charles. The show is telecast at 11 a. m. each Saturday. A studio employee checks the set lighting before the cameras roll at the right.

Lake Charles' TV Girl



LAST MINUTE PREPARATION. Mrs. Carter gets a last-second hairstyling from Ricardo of the Louisiana School of Beauty Culture. This is just one of the many details that must be taken care of before the cameras can roll on the Glamorama set.



WHERE IT ALL BEGAN. Glamorama came into being because of another TV program, the Lee Janot Show, which is on Channel 7 every weekday at 3 p. m. Here Mrs. Carter and Carolyn Mayer, right, another Lake Charles home service advisor, prepare party sandwiches for Miss Janot.

FOOD, FASHIONS and information are the format of a television program being enjoyed every Saturday morning by Lake Charles homemakers. The program at 11 a. m. on KPLC-Channel 7 features our Company's Joan Carter, a home service advisor in Lake Charles.

"I had appeared as a guest on a local weekday interview show, the Lee Janot Show," Mrs. Carter said when asked how she got into the TV business. "After being on the show two or three times, the station sales manager saw the show and came up with the idea of a cooking show. At that time he had a lady lined up to do the fashion portion of the show. The station then asked our Company if I could do it. So here I am taping a weekly show each Thursday a.m.

"When we first started out the show was an hour long, but the lady that did the fashions moved to Baton Rouge. So I asked the station if we could cut it to 30 minutes and that



FASHION NOTE. Mrs. Carter turns to modeling on the clothes fashion portion of Glamorama. Here she calls attention to the belt effect on her dress while Mrs. Billie Goux, from the Fashion in Lake Charles and a regular on the program, narrates.

still takes plenty of planning and work.

"After a couple of weeks of the show being carried by the station, the General Electric people took a 13-week contract to sponsor the show. So now at least we'll be on until December."

The food portion of the show features menus for party foods, special occasion meals or just plain nutritious family meals. You name it—a circus birthday party to plug the Shrine Circus, an after-the-game party to draw attention to McNeese College's opening football game in their new stadium—all of these and more can be seen on the show. All prepared electrically, of course, on General Electric appliances.

Other portions of the program features clothes fashions, hair styles, physical fitness and guest interviews. In all, it is a well-balanced program to show the Lake Charles homemakers other reasons for living better electrically.



HAIR FASHIONS. Mrs. Carter interviews Ricardo of the Louisiana School of Beauty Culture about the hair style he has selected for one of the models on the show. Hair and beauty fashions for the homemaker are a regular feature of Glamorama.



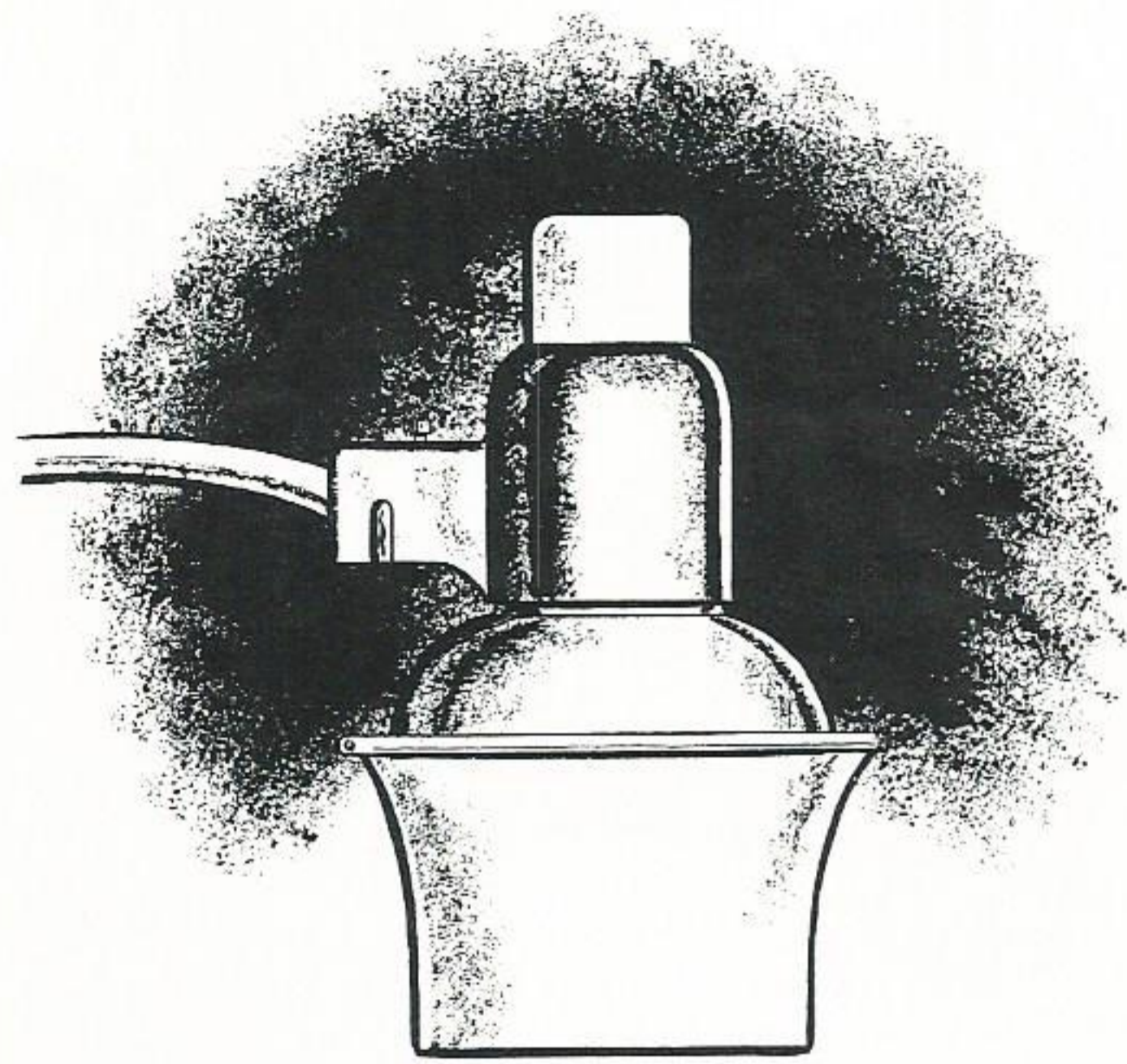
HOW TO KEEP FIT. Hilga of the Physical Fitness Beauty Studio in Lake Charles is one of the featured regulars on Glamorama. She gives the homemaker tips on how to get into shape and keep fit.



REDDY TAKES A BREAK. Phillip LeDoux, residential sales representative, Sulphur, takes time to cool off after appearing under the bright, hot Klieg lamps on Glamorama. Mr. LeDoux, costumed as Reddy, is a regular on the program, assisting Mrs. Carter in the kitchen, with the mail, etc. Reddy identifies the program with our industry's dependable service.



FILLS THE GUEST SPOT. Mrs. Carter interviews Mrs. Thelma Lyons, lunchroom supervisor for the Calcasieu Parish school district, on how she plans meals for the students during the guest spot on a recent show. In this spot Mrs. Carter features a personality from the Lake Charles area who speaks on subjects of interest to the homemakers.



Nightwatch Light Campaign Offers Employees Chance To Earn Trading Stamps

DO YOU KNOW THAT JUST A FEW MINUTES of salesmanship can qualify you for at least 1,000 trading stamps?

Yes, just a short conversation with your friends on our rural service can qualify you for the 1965 Rural Nightwatch Light Service Campaign. All you have to do is talk to our rural customers and have them sign the prospect card stating they want our Company to install an outdoor lighting unit especially designed for rural area lighting.

For each prospective customer you talk to who signs the prospect card and has a rural light installed, our Company will present you with 1,000 trading stamps.

All details regarding this campaign which gets under way November 1 and ends December 31 are being mailed to each employee this month.

1. This unit is intended for RURAL INSTALLATIONS.
2. Location of unit is subject to approval of division sales superintendent.
3. Turn in only prospects whom you have CONTACTED PERSONALLY and whom you have determined are bonafide prospects.
4. A sales representative will take care of the final sales call and having the application signed by the customer.
5. If in doubt about whether a person is in an area where we want to install this service, check with your local sales department before contacting this person.
6. All prospects cards must be DATED AND SIGNED.
7. In case of duplicate prospect cards, the date will determine who obtains the stamps. Identical dates or other questions will be decided by division sales superintendent.
8. Units are installed only on our poles where EXISTING SECONDARY is available and space permits safe installation.
9. A \$50 charge will be made for an additional pole when a location is desired that

is within one span of our EXISTING SECONDARY FACILITIES.

10. Payment of pole charge can be financed on 12 month basis.
11. Customer must sign prospect card.
12. To qualify, a prospect card signed by the customer must be in possession of a sales department representative by midnight, December 31, 1965. Prospect must take service from our Company. To establish a definite date for closing the campaign, all lights must be installed by February 15, 1966. Stamps will be issued to divisions on the basis of weekly memorandum requests from division sales superintendents.

If you didn't get your share of stamps in the previous campaign, now is the time to interest your friends in installing a rural nightwatch lighting system.

If you're looking for an extra bonus for that special Christmas gift be sure to turn in your prospect cards early, so installation can be made in time for you to receive your stamps before the holidays.

Safety and Security Bargain

FOR ONLY A FEW PENNIES A NIGHT, approximately \$3.25* a month added to customers' electric bills, our Company will install and maintain for these customers a new Mercury Nite-Lite especially designed for rural areas.

This durable and powerful outdoor lighting unit is equipped with a built-in photoelectric cell which automatically turns the light on at dusk and off at dawn without your concern or attention. The low monthly rate of \$3.25* is the entire cost . . . no investment and no down payment.

**Fuel or tax cost were applicable to the rate may cause monthly charge to vary a few cents.*

Construction Begun in Arkansas

On SEFOR Nuclear Reactor

CONSTRUCTION GOT UNDERWAY last month on an experimental nuclear reactor being built by our Company and 17 participating electric utilities in cooperation with a West Germany research center and General Electric Company.

Purpose of the new project is to develop an advanced type of fission reactor. The program will cost about \$25 million.

It is hoped that the program will provide a new method for producing electricity with nuclear fuel. It is estimated that by 1970 the average household will be using twice the electricity as today. New methods of producing electric power will be provided to meet this challenge.

The project has been described by nuclear quarters as an outstanding pioneering effort in harnessing nuclear power for peaceful use, and as a milestone in international cooperation.

A construction permit has been granted for the reactor by the Atomic Energy Commission and steel plates for the 114 feet high reactor containment vessels are on the scene for the start of installation. The AEC permit forbade nuclear equipment from being put in place prior to September 20.

Installation of plates in the hole is expected to take about 15 weeks. Every weld will be X-rayed and re-done where necessary. Estimated that 1,200 X-ray shots will be made during the installation. Following pressure test on the containment structure plate, concrete pourings will begin and completion of this phase is expected next summer.

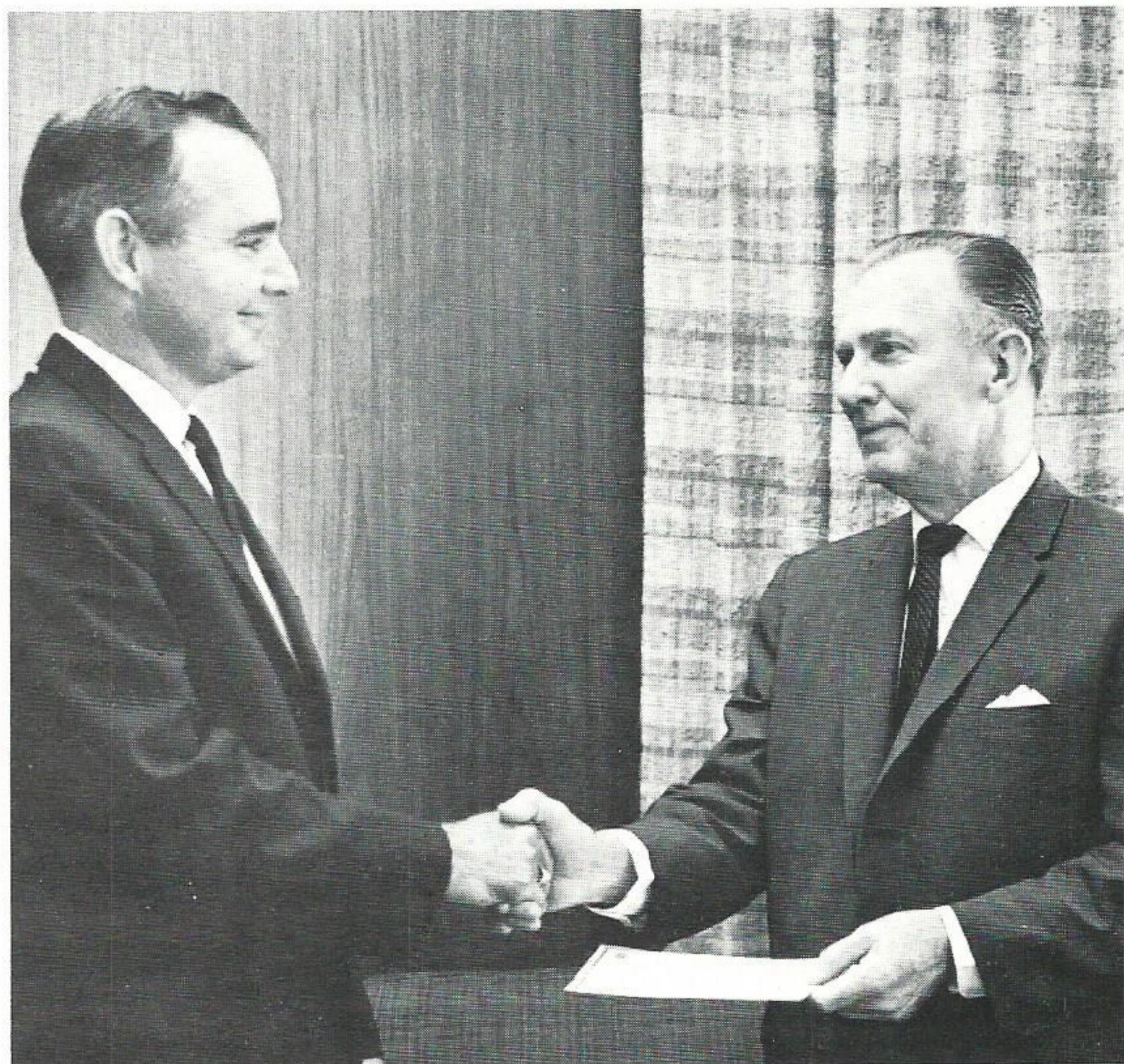
The project, called "SEFOR" for Southwest Experimental Fast Oxide Reactor, is scheduled to start up in the summer of 1967. It is the first of a family of fast ceramic fuel reactors which General Electric Company expects to build for use in very

large power plants (one million kilowatts or larger) in the 1970's.

Upon completion of the SEFOR Project, General Electric will operate the installation. Personnel from West Germany (Karlsruhe Research Center) will also participate in operation under direction of General Electric. The Karlsruhe Laboratory, in addition to representing West Germany, is taking part in behalf of the European Atomic Energy Community (Euratom).

The European nations, in addition to West Germany, include Belgium, France, Italy, Luxemburg and The Netherlands. The foreign nations are contributing five million dollars toward the SEFOR project. High priority has been given by the Atomic Energy Commission to the research program. Our Company and other participating companies are hopeful that this important development will lead to economical use of nuclear fuels to help keep the quality of electric service up and the cost down.

Five of the 17 companies involved operate in Texas and Louisiana. In addition to our Company they are: Louisiana Power & Light Company, New Orleans Public Service, Southwestern Electric Power and Central Louisiana Electric Company.



FIRST TO QUALIFY. Melvin Cole, an engineer in Beaumont Division T&D, receives a check from President Richard for being the first Gulf Stater to qualify under the 100 per cent reimbursement program for completion of a master's degree. Mr. Cole received his master of engineering science degree from Beaumont's Lamar Tech in August. President Richard announced the program on August 18. Mr. Cole started work on his master's degree in 1962. He was graduated from Louisiana State University with a BS in civil engineering in 1952. He has been an employee of our Company since 1957. Mr. Cole presented "An Analysis of Economic Replacement of Equipment Based on Technological Improvements" as his thesis. In his thesis he developed a reliable technique for determining when equipment is economically replaceable.



CITY FATHERS CHECK SOURCE OF THEIR POWER. Our Company played host to 13 Port Neches city officials September 21, by giving them a firsthand inspection of Sabine Power Station and later entertained them at a dinner in Port Arthur. The Port Neches delegation was headed by Mayor T. J. Sasser, Jr. Shown here in the control room are, from left, J. T. Graves, operations supervisor, M. P. Nugent, a city commissioner and mayor pro-tem; Roy Ramke, city electrical inspector; E. B. Cochran, city attorney; H. G. Lee, a city commissioner; and Elwyn Graham, assistant director of public works. Hosts were headed by C. M. Scott, division manager, Port Arthur.

Garvin Named Line Foreman

EARL L. GARVIN, formerly utility foreman in Beaumont T & D, was promoted to line foreman on October 1.

He joined our Company as a helper in T&D Line at Beaumont



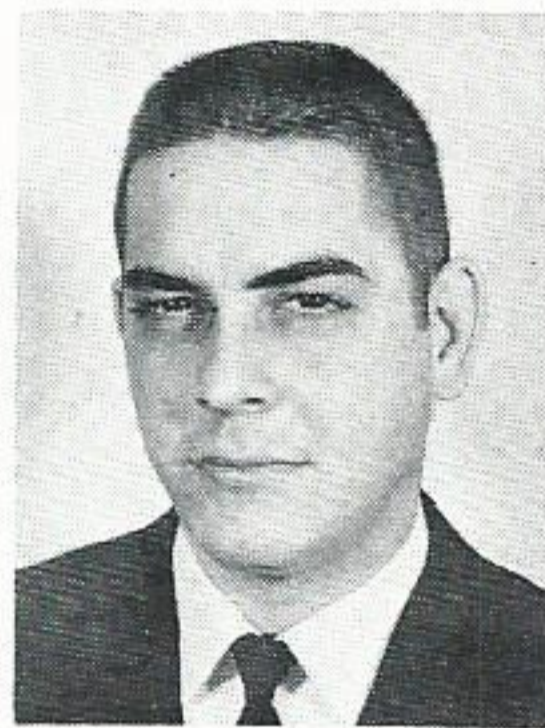
Earl Garvin

in 1948. He had been a utility foreman since 1963.

He is married to the former Eloise Martha Strode of Vidor and they have two children, Ronnie, who lives in Amarillo, and Becky Lynn, a sophomore at Forest Park High School in Beaumont. The Garvins are members of the Victory Assembly of God Church.

He is a graduate of Beaumont High School. A native of San

Antonio, Texas, Mr. Garvin served in the U. S. Army infantry during World War II and saw duty in Germany, France and Belgium.



Sam Gallier



Joyce McClung

Two Promoted At Beaumont

SAM GALLIER, JR., formerly a draftsman in Civil Drafting, Beaumont, was transferred to System Records Management-Duplicating-Photo Copy on September 16 and promoted to a section head.

He has been employed since 1959, when he came to work as

engineer's helper in System Engineering-Survey. He was transferred to Civil Drafting in 1960.

He is a native of Woodville and is married to the former Dorothy Durham of Woodville. They have three children, Sammie, James and Sheri.

JOYCE N. McCLUNG, formerly departmental clerk in System Treasury-Audit, was promoted to confidential records clerk in the Internal Audit Section on September 1.

Mrs. McClung has been with our Company since 1962 when she came to work as clerk in System Treasury - General Accounting. Prior to coming to work she was employed by several area banks. She had been a departmental clerk in the Audit Section since 1964.

A native of Henderson, Texas, Mrs. McClung attended school in Sour Lake and is a graduate of Sour Lake High School. Her husband, Ralph, is employed by Holm's Chevrolet in Silsbee. They have two children, Michael and Cindy.

Fuselier Moved To Commercial Sales

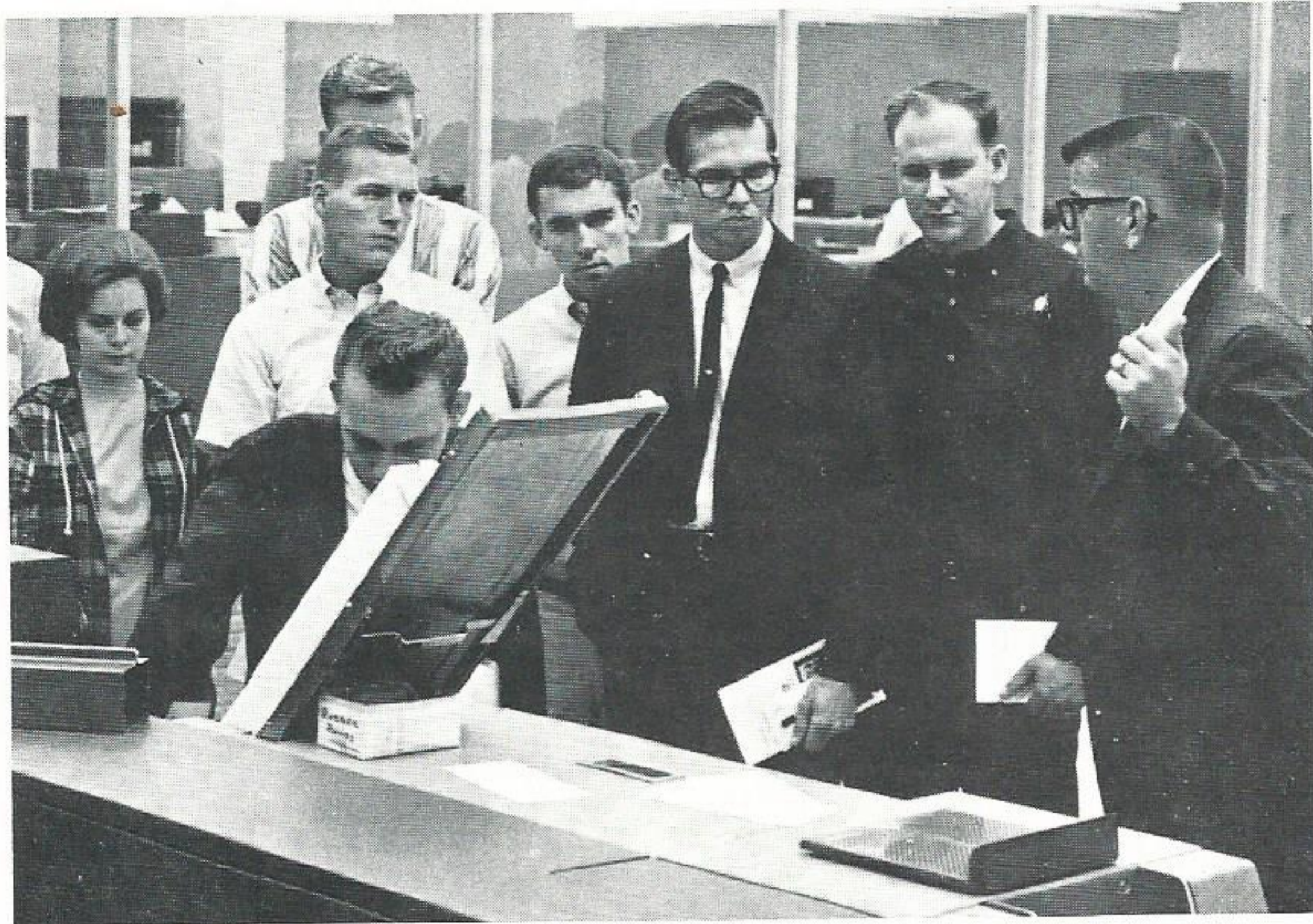
VIRGIL FUSELIER, formerly a residential sales repre-



Virgil Fuselier

sentative in the Lake Charles Division Sales, was made a commercial sales representative senior on September 12.

A native of Sweetlake, Louisiana, Mr. Fuselier has long been a resident of Lake Charles. He attended McNeese State College and received a business educa-



TOUR DATA PROCESSING CENTER. Several groups of Lamar Tech students have recently been making tours of the Data Processing Center on the third floor of the General Offices in order to get a close look at the equipment and procedures they have been studying about in class. Here G. L. Anderson, confidential accountant in Data Processing Operations, explains our IBM procedures to a group of students. Other Lamar groups have included the Economics Club which toured the center one evening earlier this month.

tion degree from there in 1959.

He joined our Company in 1960 as a residential sales representative. Prior to that he worked for a local wholesale grocery firm. While a student he was employed by Sears, Roebuck & Company in Lake Charles.

He is married to the former Jackie Hinman of Lake Charles and they have two sons, Grady and Drew.



**Congratulations
On Your
Promotion**

Luther M. Barrow, Jr. to repairman first class at Neches Station.

Thomas E. Parsley to relayman second class, Engineering-System Services-Relay, Beaumont.

James W. Bates to relayman second class, Engineering-System Services-Relay, Beaumont.

Betty C. Edmiston to steno-

senior, Engineering - Services - Right-of-Way, Beaumont.

Austin Gothe to laborer II-janitor-porter, Building Services, Beaumont.

Harold G. Solomon to stores truck driver, Storeroom, Beaumont.

Delbert Montgomery to storeroom assistant, Storeroom, Beaumont.

Jerome C. Valenta to storekeeper, Beaumont.

Alvin R. East to test technician second class, Sabine Station.

Marvin J Schaefer to lineman second class, Conroe.

Milton L. Huebel to apprentice-T&D-Line, Port Arthur.

James D. Simpson to apprentice-T&D-Line, Port Arthur.

Phillip M. Losack to lineman fourth class, Port Arthur.

William P. Dillon, Jr. to lineman second class, Port Arthur.

Donald J. Rabalais to serviceman first class, Baton Rouge Gas.

Eddie J. Hills to laborer II, Gas Department, Baton Rouge.

Carter A. Carpenter to primary and special tester, Baton Rouge.

Norman C. Cockerham to engineering assistant, T&D-Engineering, Baton Rouge.

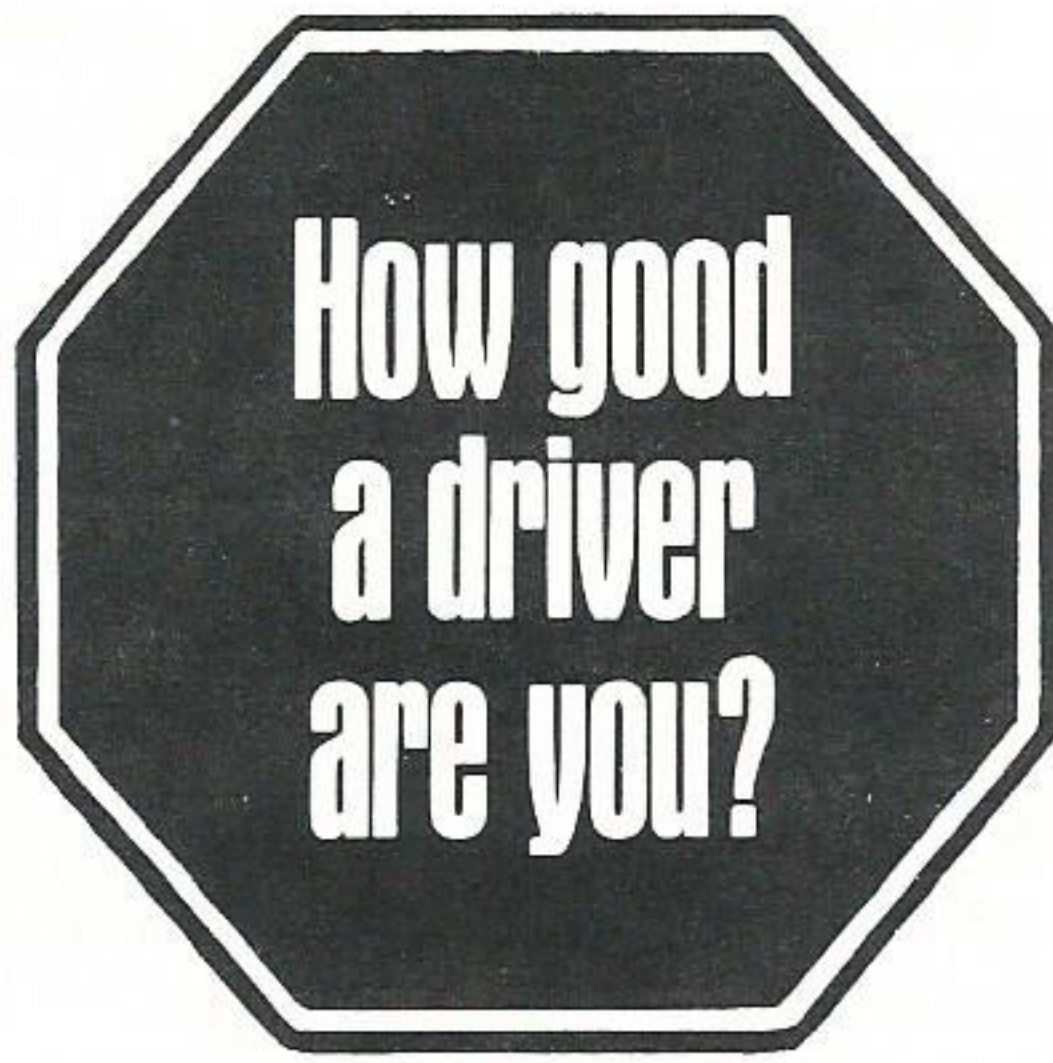
Lawrence Jordan, to laborer II - janitor - porter, Accounting, Denham Springs.

Robert L. Gary, to apprentice, T&D-Line, Jennings.

Lemuel A. Gravelle to lineman second class, Jennings.

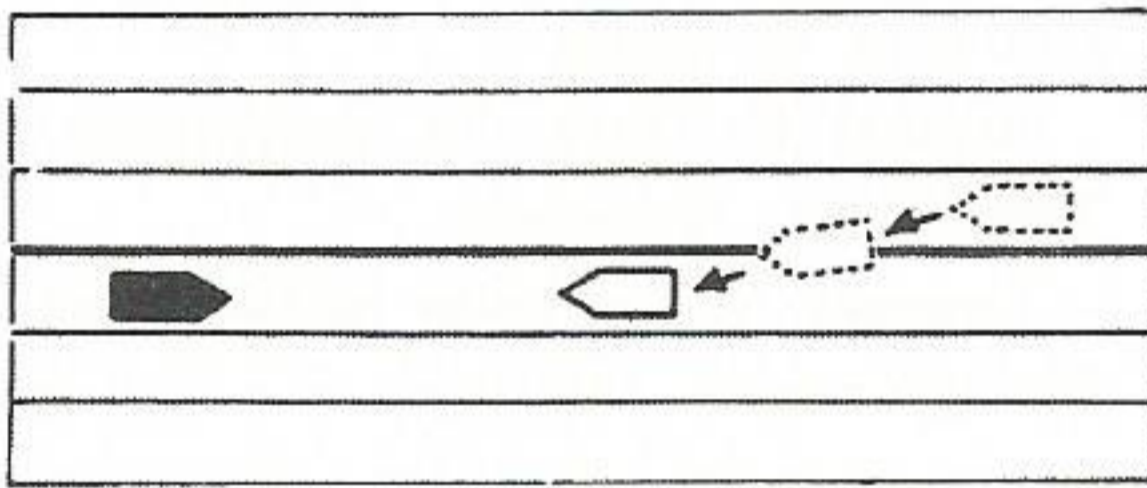


LOUISIANA STATION'S TWO-MILLION MAN-HOUR AWARD— Baton Rouge Vice President Floyd R. Smith presents the Company award and Edison Electric Institute award to Louisiana Station personnel for two million manhours worked without a lost time accident. Holding the intra-company award is R. H. Lawton, plant superintendent. Second from right holding the Edison Electric Institute Award, is Lovett Young, chief chemical engineer. Also representing Louisiana Station is S. A. McKenzie, section head. The awards cover the period April 30, 1960, to March 17, 1965.



What
would you
do in
this
driving
situation
?

by Tom Dobbs



An oncoming vehicle drifts across the center line and keeps moving toward you for no apparent reason.

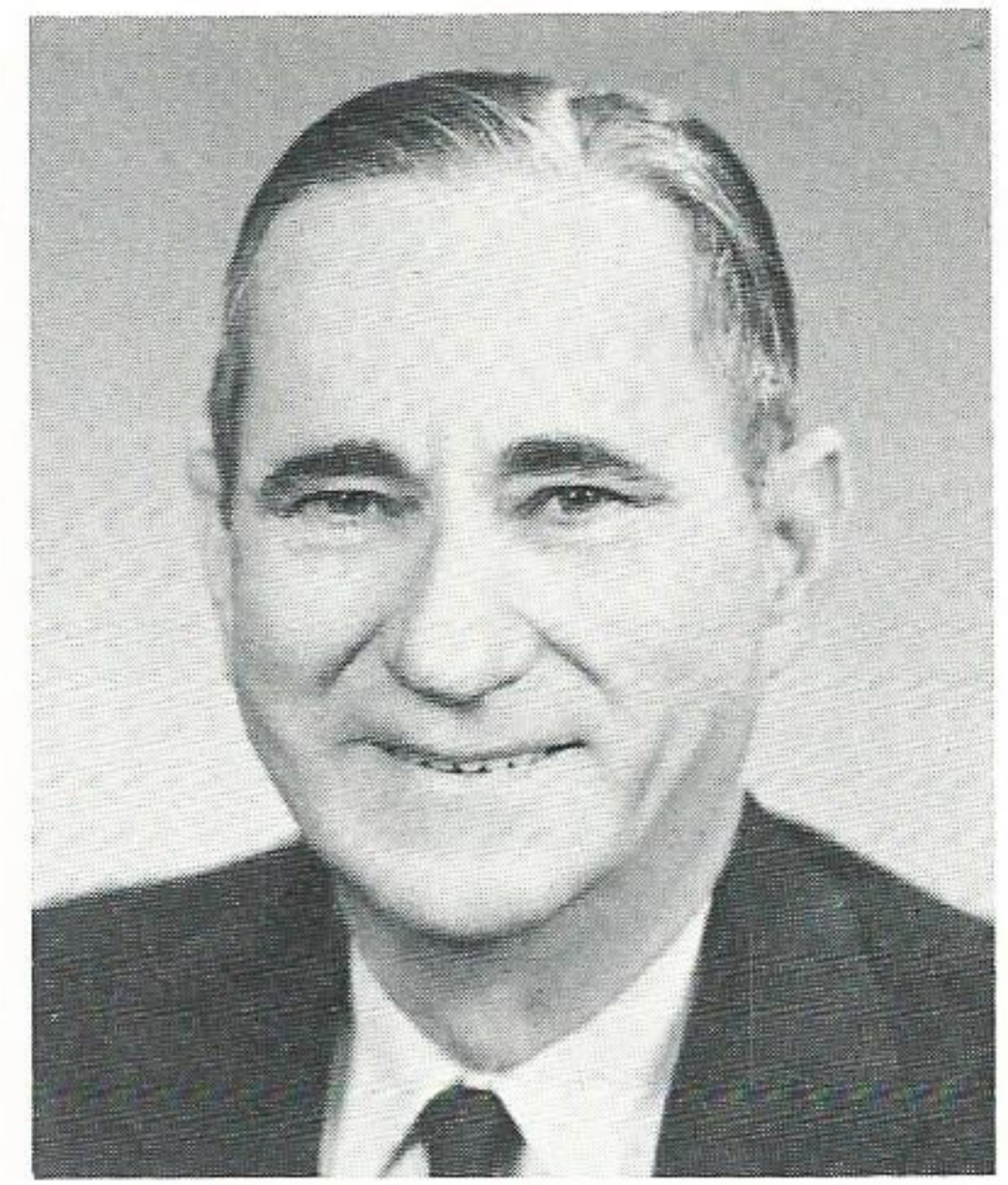
YOU SHOULD: (a) Slow down and move to the left. (b) Speed up, blow your horn and move to the left. (c) Blow horn and move to the right.

Reprinted by permission, from "Family Safety," quarterly publication of the National Safety Council.

(Answer on page 20)



R. S. Burges



E. W. Robertson

Death Claims Four Gulf Staters

EMMETT W. ROBERTSON, 60, a substation operator in Beaumont, died September 22 after becoming ill at work. Funeral services were held September 25 in Beaumont.

He had been an employee of our Company for 34 years. He was a member of Trinity Methodist Church and a member of the board of stewards of the church.

Survivors include his wife, Mrs. Dorothy Robertson, 980 19th St., Beaumont; one brother and three sisters.

RICHARD S. BURGES, 69, a retired Neches Station employee, died October 3 in a Beaumont hospital after a long illness. Funeral services were held October 5 in Beaumont.

Mr. Burges began his career at Neches Station as a pipe fitter for Stone & Webster Engineering Corporation while the plant was being constructed in 1925. He left S&W in 1929 and joined our Company as a repairman at Neches Station. He was a master repairman at the time of his retirement on September 1, 1961.

A resident of Beaumont since 1923, he was an Army veteran of World War I. He was a member of St. Matthews' Episcopal Church, South Park

Masonic Lodge No. 1320 and the American Legion.

Survivors include his wife, Mrs. Vivian Burges, 4090 Inez, Beaumont; two daughters, Mrs. H. R. Stansbury and Mrs. Arthur Furby, both of Beaumont; a brother and a sister; and four grandchildren.

WILLIE ENGLISH, a retired employee in the Beaumont Production Department, died October 3 after a six-week illness.

He retired March 1, 1959, after more than 40 years with our Company. He joined the East Texas Electric Company, later to become Gulf States, at Beaumont in 1918.

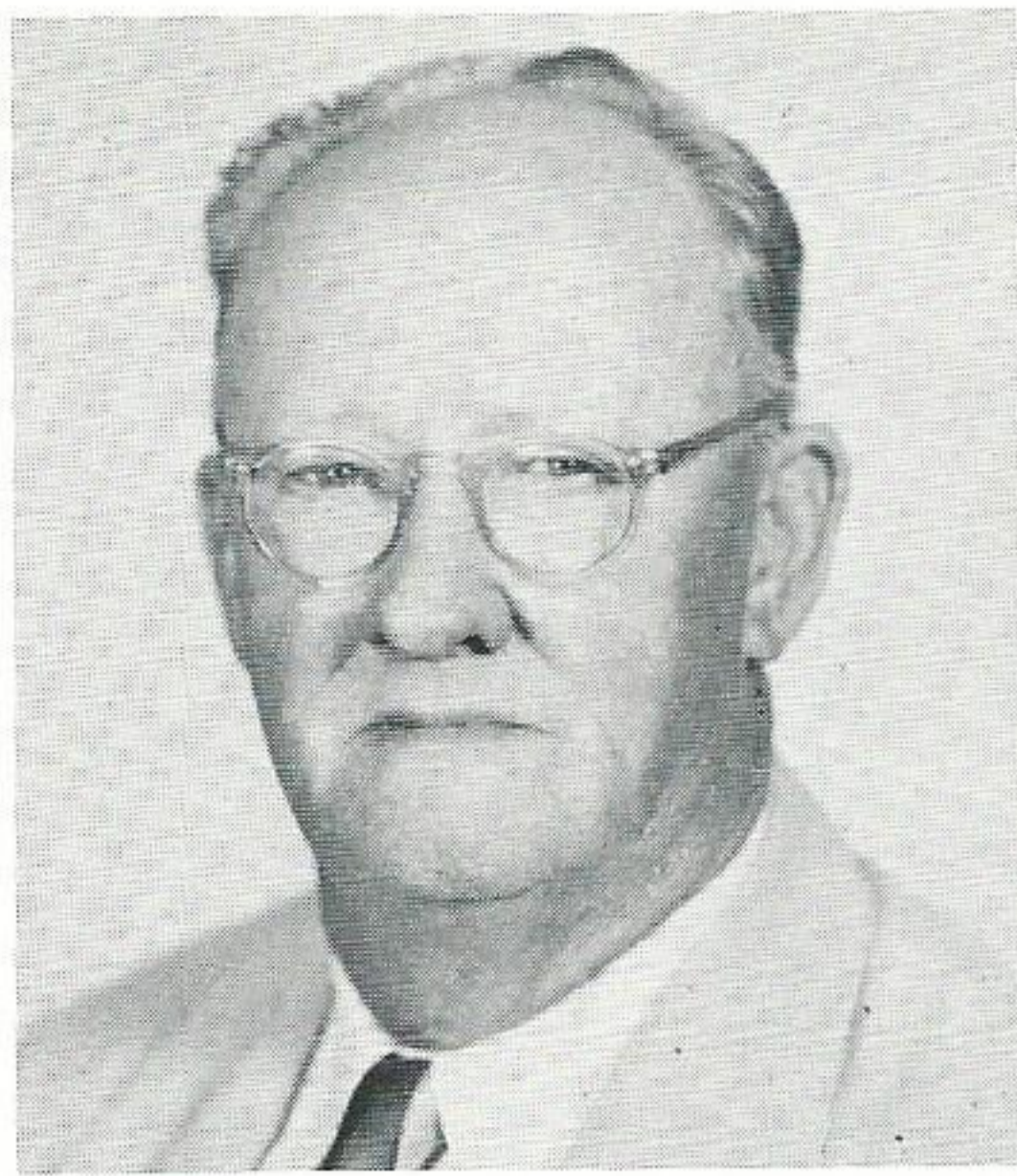
He served in a number of positions at Neches Station. He was a special laborer at the time of his retirement.

He is survived by his wife, Mrs. Annie English, 1440 Sherman, Beaumont.

Sympathy to:

R. M. Craig, division engineer, Navasota, on the death of his brother, Maurice H. Craig of Houston, September 4, in a Houston hospital.

Herman Kuykendall, retired Navasota employee, on the death of his son, Don Ivan, 34, of Huntsville, on October 8.



Rhea Hudnall

RHEA HUDNALL, retired Liberty District superintendent, died October 12 in Liberty. Funeral service were held in Liberty on October 13, burial was in Rhome, Texas, on October 14.

Survivors include his wife, Mrs. Rhea Hudnall, P. O. Box 129, Liberty; two sons, Eldridge, Liberty, and James, Austin; and a daughter, Mrs. James T. Strawn, Baytown.

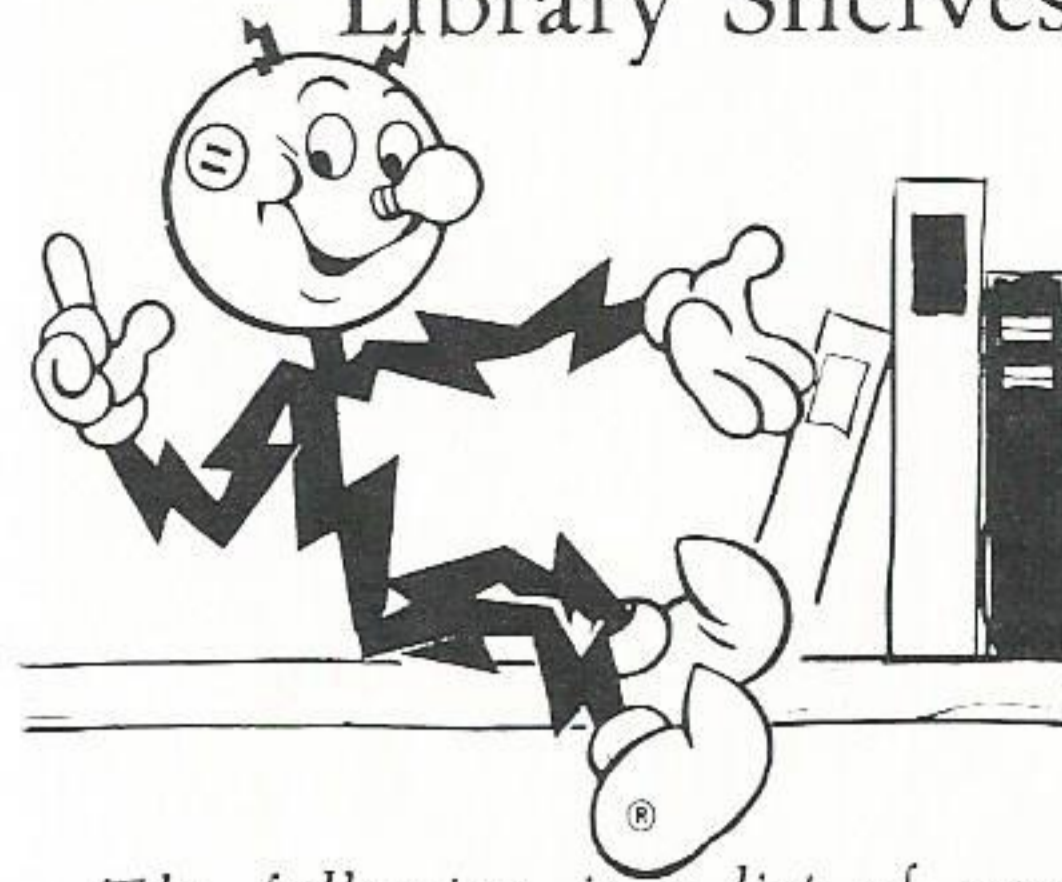
Mr. Hudnall, who was employed by our Company and its predecessor companies since 1915, was district superintendent in Liberty for 12 years prior to his retirement in 1957. From 1915 to 1925 he was in line and service work in the Sour Lake area. In 1925, he became an electrician at Sour Lake and a year later was promoted to local superintendent at Dayton.

In 1926, Mr. Hudnall was transferred to Hull and promoted to superintendent and, in 1945, he went to Liberty as district superintendent.

Halloween Treats

THE AMERICAN DENTAL Association suggests that parents substitute fruits, sugarless gum or popcorn for candy in Halloween "trick or treat" bags this year. Since sugary substances, such as candy or chewing gum can cause decay, parents will be helping to prevent tooth decay problems in youngsters.

On Our Library Shelves



The following is a list of new books recently added to the Company Library in Beaumont. The library contains a large number of books and periodicals on a variety of subjects. These may be checked out for use by employees throughout the system. You are urged to make use of this facility.

Michael Faraday by L. Pearce Williams. Biography illustrating Michael Faraday's monumental contributions to modern physics.

Industrial Psychology by B. von Haller Gilmer. Contributions of experimental, social, and clinical psychology, together with certain phases of business organization procedures, into a unified description of how modern psychology fits into the industrial complex.

Exploration in Management by Wilfred Brown. A description of the Glacier Metal Company's concepts and methods of organization and management.

Texas Quarterly (Spring 1965—Volume VIII: #1) Nonfiction, fiction, poetry, and illustrations.

Reporting Financial Data to Management by William D. Falcon. Discusses financial reports and reporting procedures from a companywide viewpoint; the effective presentation of reports; the planning and implementation of an effective reporting system; some key elements of financial re-

porting; a chart-oriented method of reporting return on investment; and a reporting system emphasizing the comparison of results with previously planned performance.

Managerial Breakthrough by J. M. Juran. Fact-filled manual designed to help every manager implement his ideas and control any action or project under his supervision; enables managers to plan, decide, and act according to what is best for their particular company.

Reference Manual for Stenographers and Typists by Ruth E. Gavin and E. Lillian Hutchinson. Supplies simple and accurate answers to thousands of questions a writer asks everyday.

Handbook of Middle American Indians Natural Environment and Early Cultures—Volume I by Robert Wauchop. A definitive encyclopedia of the environment, archaeology, ethnology, social anthropology, ethnohistory, linguistics, and physical anthropology of the native peoples of Mexico and Central America.

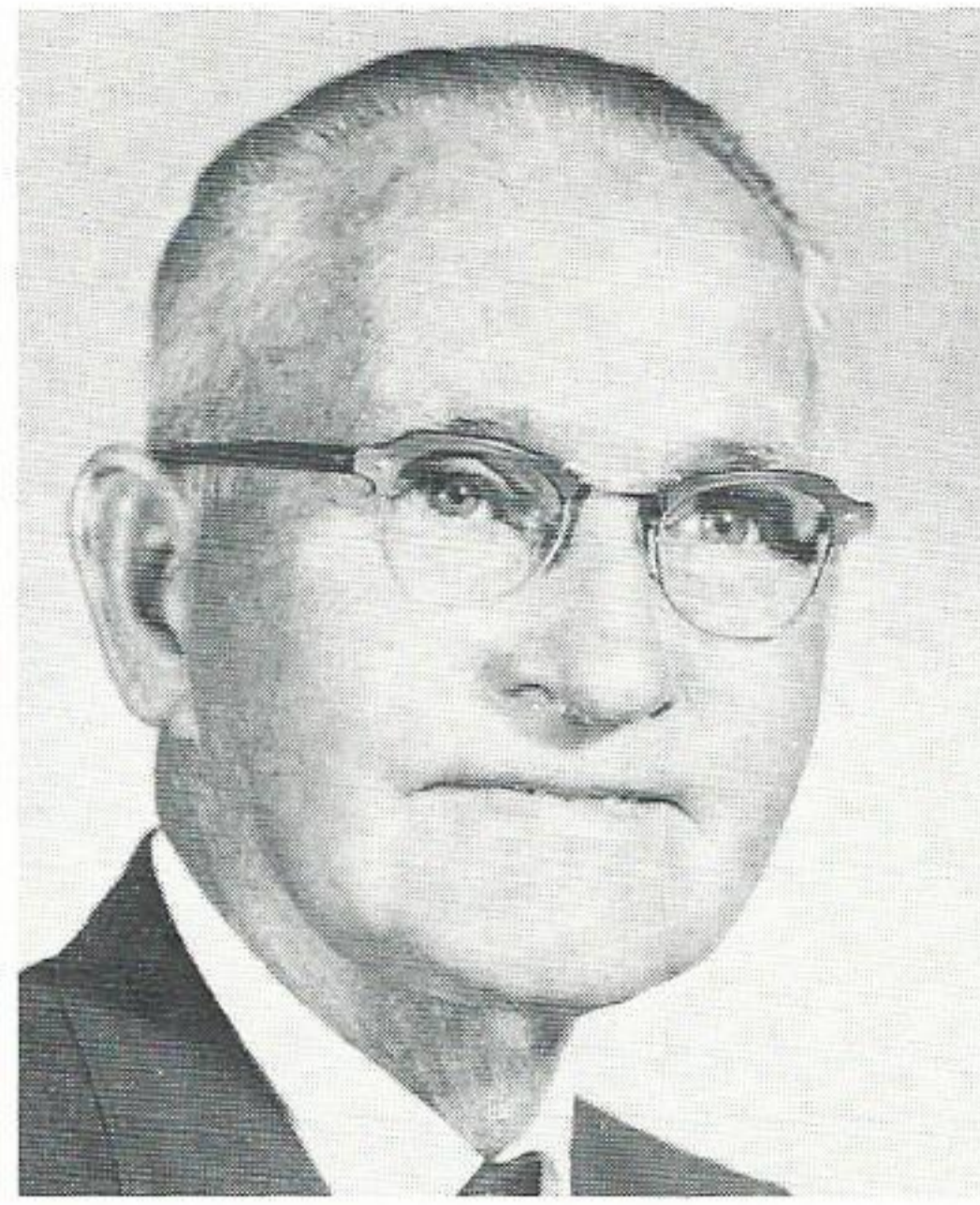
History of Mankind, The Ancient World—Volume II by Luigi Pareti. Describes the cultural and scientific progress of mankind between 1200 B.C. and A.D. 400. It tells the story of human progress through a period that left its imprint on all cultures and civilizations which followed it.

Governmental Guide — 1965 (Texas) (Louisiana) This book includes the following data: Federal, State, County, City Officials; Legal Directory; Chambers of Commerce; Newspapers; Editors; Radio; T. V.; Educational Material; Other Necessary Finger-tip Data.

Orifice Metering of Natural Gas (Gas Measurement Committee Report #3) Orifice Metering of Natural Gas supplements Report #2.



F. J. Bello



W. A. Efferson



J. C. Hays

Four Retire in Baton Rouge

WILLIAM A. EFFERSON, local district superintendent at Port Allen, Louisiana, since 1945, has been with our Company since coming to work on July 27, 1923, as a groundman at Baton Rouge.

He served in various lineman positions until named district representative in Denham Springs in 1930. In 1941, he was promoted to district superintendent of the Eastern District of Baton Rouge Division. He was transferred to Cleveland, Texas, in 1942 as district superintendent. He was transferred to Port Allen in 1945.

A native of Hammond, Louisiana, Mr. Efferson was educated there. He is married to the former Laura Dupuy and they have four married children. The Efferson's live at 347 Ave. A, Port Allen.

He is a member of the Port Allen Lions Club, the Knights of Columbus and the Holy Family Catholic Church in Port Allen. He is a member of the American Legion and is a Navy veteran.

"I plan to spend most of my time at my camp on False River," Mr. Efferson said when asked about retirement plans.

SAM H. SHARP, storeroom supervisor at the Government Street Service Center in Baton Rouge, joined our Company at Baton Rouge on January 16, 1934, as bill deliverer.

He has been storeroom supervisor since 1952. He was made assistant storekeeper in 1934.

A native of Harelson, Louisiana, he is married to the former Madelaine Bacot of Baton Rouge. They have two children, a daughter, Bobby, who is a graduate of LSU in education, and a son, Sam, Jr., a senior at LSU, majoring in business. He is also a major in the Air ROTC. The Sharps live at 255 Sharp Road in Baton Rouge.

Mr. Sharp is a past president, a member of the board of directors and chairman of the Boys Camp and Boy Scout Committee of the Optimist Club. He is also a member of Inter-Civic Club Council and a member of the Presbyterian Church.

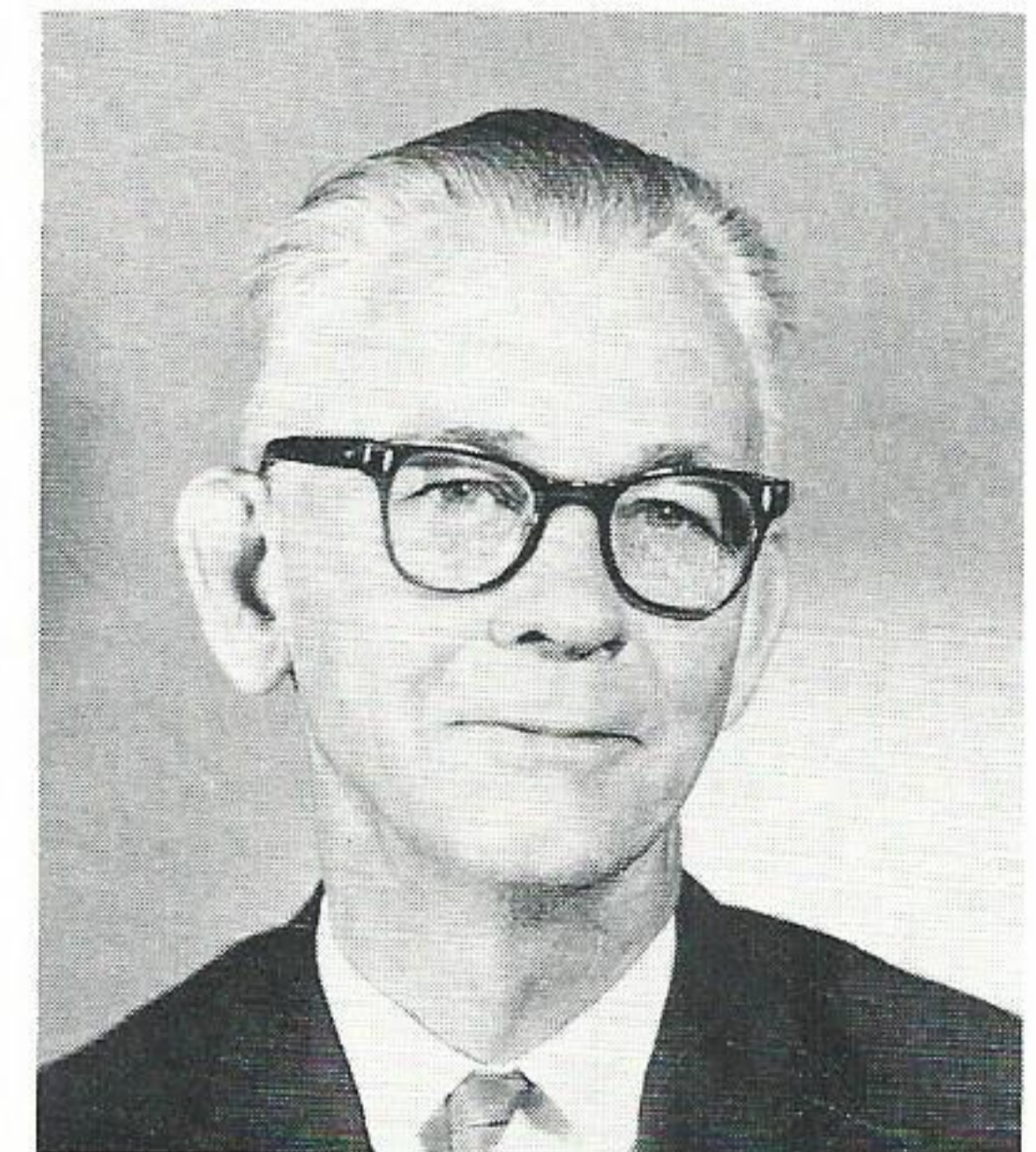
"Each morning I'll decide what I'm going to do that day," Mr. Sharp said. "I hope to get in lots of fishing, hunting and bowling. Otherwise I put in my time maintaining my property, raising a garden with a little travel mixed in."

FERDINAND J. BELLO, meter and regulator foreman in the Baton Rouge Gas Department, started out as a helper in the Gas Meter Shop on September 22, 1923.

He was made a meter repair and maintenance man in 1925. He was promoted to meter foreman in 1936 and was named meter and regulator foreman in 1939.

He is a native of Chamberlain, Louisiana. He and his wife, Rena, lived at 8073 Queenswood Court in Baton Rouge. They are members of Our Lady of Mercy Catholic Church.

JULIAN C. HAYS, section head of the Maps and Records section of the Baton Rouge T&D since 1956, retired on September 1 after being an employee since September 12, 1927.



S. H. Sharp

He came to work as a draftsman in the Baton Rouge T&D. He was promoted to assistant superintendent of the Meter and Service Department in 1941 and was named an engineer in 1942.

He entered military service in September, 1942. He returned in 1943 as an engineer in Baton Rouge. He was made a departmental accountant in 1949 and held that position until made section head.

A native of Kent's Store, Louisiana, he was graduated from LSU with a BS in electrical engineering. Mr. Hays lives on Rt. 2, Clinton, Louisiana.

Melancon Attends Underground Meeting

A. M. MELANCON, supervisor of standards, System Engineering, Beaumont, recently attended General Electric Company's third Underground Distribution Systems Conference in Pittsfield, Mass.

The four-day exchange of ideas and technical information of distributing electric power underground, rather than through overhead system, reflected the power industry's growing interest in the technology which is expected to place a major portion of such new equipment underground by 1970.

The conference served as a review of recent utility experience with underground distribution, and included discussions of the trends, appearance and economics of modern systems.

Smith Elected to B. R. Chamber Board

Floyd R. Smith, vice president, Baton Rouge, has been elected a director-at-large for a one-year term on the Baton Rouge Chamber of Commerce Board.



THE SKY IS THE LIMIT—Sales personnel of the Baton Rouge Division Residential Sales Department recently took time out to "ham" it up a little in recognition of having reached 6,500 KWH average annual use of residential electric service in the area. The Baton Rouge department, headed by Virgil Shaw, sales superintendent, and Marcus Andrews, residential sales superintendent, also won the KWH Loadbuilders Trophy for the months of June and July, 1965. Pictured with the "loot", which includes achievement awards, KWH Club Plaques and Loadbuilding Trophies won in recent years by the Baton Rouge Sales Department, are (l-r, back row) Charles Foss, Jessie Braud, Francis Maxwell, H. Delaune, Harriet Babin, Thomas Allen, Julius Courtney, Sidney Allison, Mildred Tribble, Garland Whittington, Sally Pelton, Georgie Simon, (front row) Marcus Andrews, Donald Hood, Aubrey Glover and Bill Goff. Not present was Tom Boone, who was on vacation when picture was made.

Let's Read Our Mail

FROM BEAUMONT:

Dear Sir:

Mr. Gibbs' 6th grade room wishes to thank you for the mechanical pencils and pamphlets on energy. They are very helpful to us in our study on energy.

Sincerely yours,

Janis Hansen
(class secretary)

Regina-Howell Elementary

FROM CONROE:

Dear Mr. Reagan:

I want to say thanks to you and Mr. Turner, Editor, for the outstanding job you have done on selling the story of Conroe through your very excellent magazine "Plain Talks".

We feel that this is an outstanding service that you have performed. We especially appreciate all of the many fine things that you said about us and our town. I might add, that your idea of promoting towns throughout your service area in this manner is an excellent one and is sure to win you many friends.

Again, thanks for a job well done.

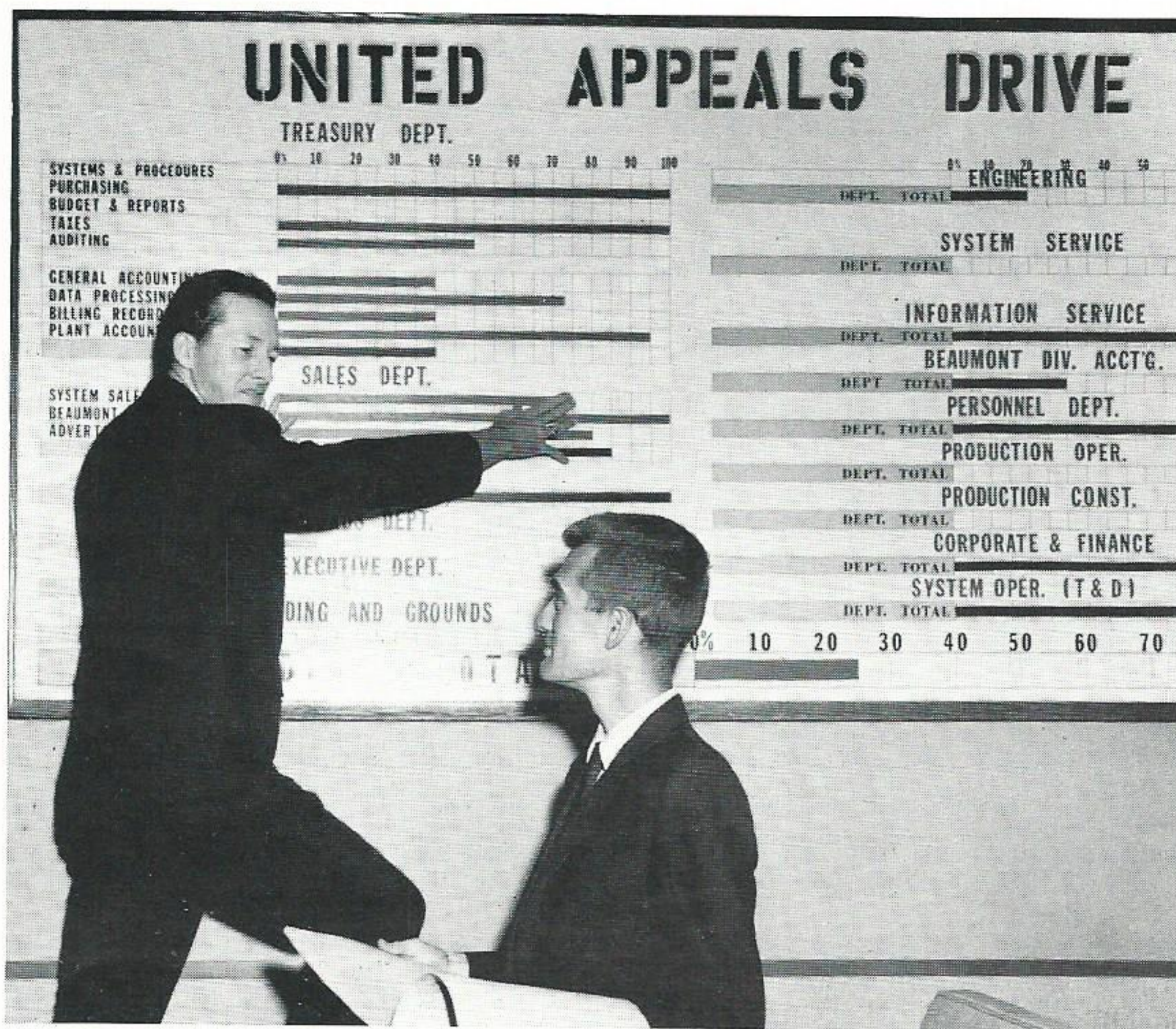
Sincerely,

Dick Kendall

Executive Vice President
Montgomery County

Chamber of Commerce

A Bonded Benefit: The minute you buy a U. S. Savings Bond, it goes to work for your future. It pays \$4 for every \$3 invested at maturity—even more when you hold it longer.



SCOREKEEPERS FOR UNITED GIVING. Doug Olson, Plant Accounting, Beaumont, right, reads off the percentages while Wayne Holbrook, Purchasing, Beaumont, brings the scoreboard up to date on "Fair Share" giving during Beaumont's United Appeals campaign. Mr. Olson is chairman of our Company's general office drive and Mr. Holbrook is his assistant. The General Offices, with over 500 employees, went over the 70 per cent mark in "Fair Share" pledges early in October to earn another United Appeals banner. L. N. Brannan, supervisor of area development, Beaumont, is chairman of our Company's Beaumont United Appeals campaign which encompasses the General Offices, Neches Generating Station and the Service Center.



THRIFT PLAN

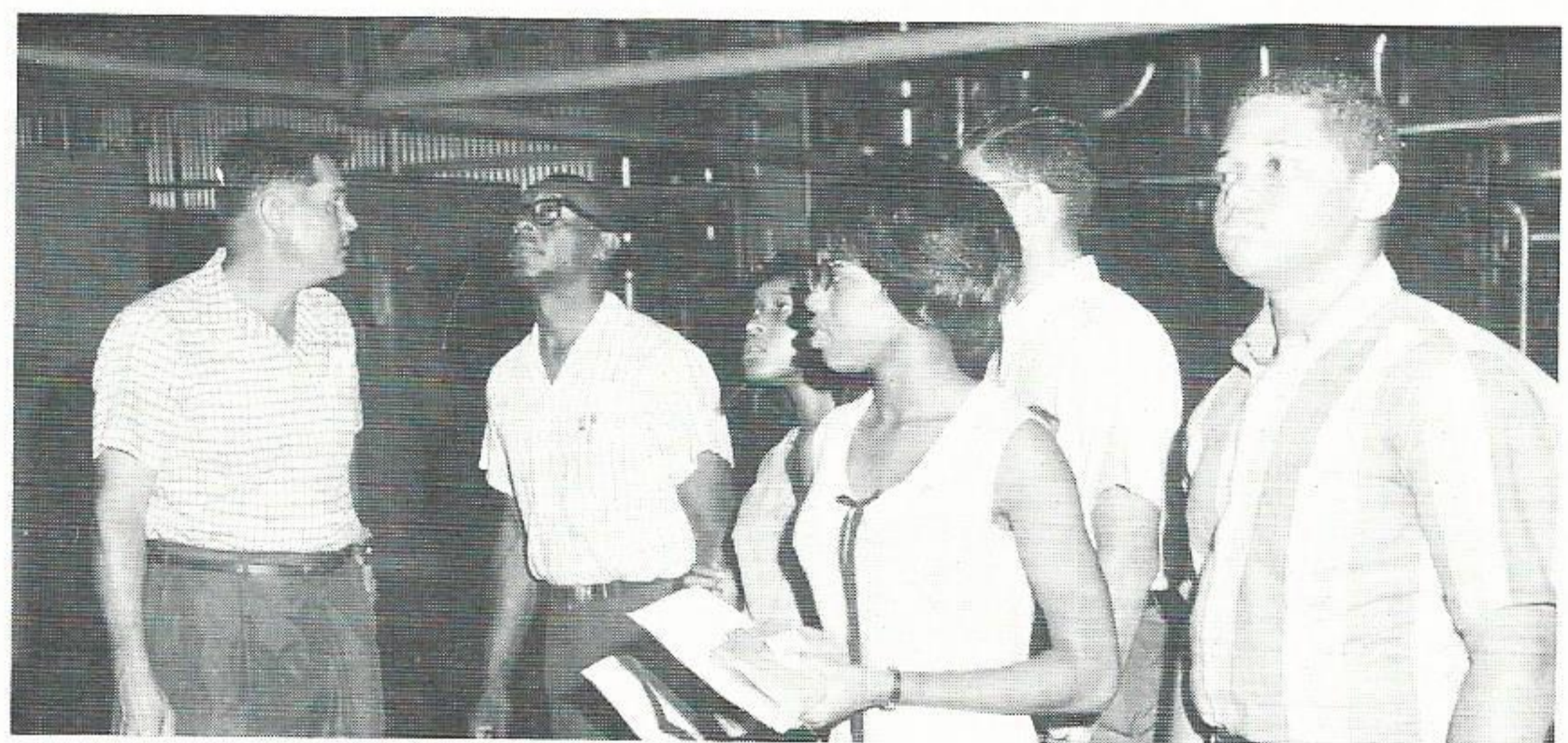
THE TRUSTEE OF THE EMPLOYEES Thrift Plan made the following investments in Company stock during September covering employee deductions and Company contributions through August as follows:

- 2,746 shares of common stock at a total cost of \$71,423.03 or an average cost of \$26.01 per share;
- 120 shares of \$4.40 preferred stock at a total cost of \$11,359.50 or an average cost of \$94.663. These prices included brokerage and commission fees.

The Trustee withdrew \$2,639.93 from the savings department of the First Security National Bank of Beaumont for the purchase of stock.

Recent Transfers

Pamala D. Harmon transferred from Budget, Financial Accounting and Regulator Reporting to



TOUR WILLOW GLEN. Floyd Langlois, test supervisor, Willow Glen Station, serves as a group guide to 19 students from the Laboratory School at Southern University in Baton Rouge, when they toured Willow Glen Station recently. The students were given general information about our Company by Jack Worthy, assistant advertising director, Baton Rouge Division. Mr. Langlois told the students what they would see in the plant prior to the tour. The group was accompanied by Edward S. Jenkins, science teacher at the school.

Customers Accounts, Beaumont, as a stenographer.

Linda S. Burford transferred from Purchasing to General Accounting-Stores, Beaumont, as a clerk.

Robert H. Steele transferred from Orange Service to Orange Line as a lineman first class.

Glenn McGuire transferred from Orange Line to Orange Service as a serviceman first class.

Homer C. Chaver transferred from Beaumont Line to Silsbee Service as a serviceman first class.

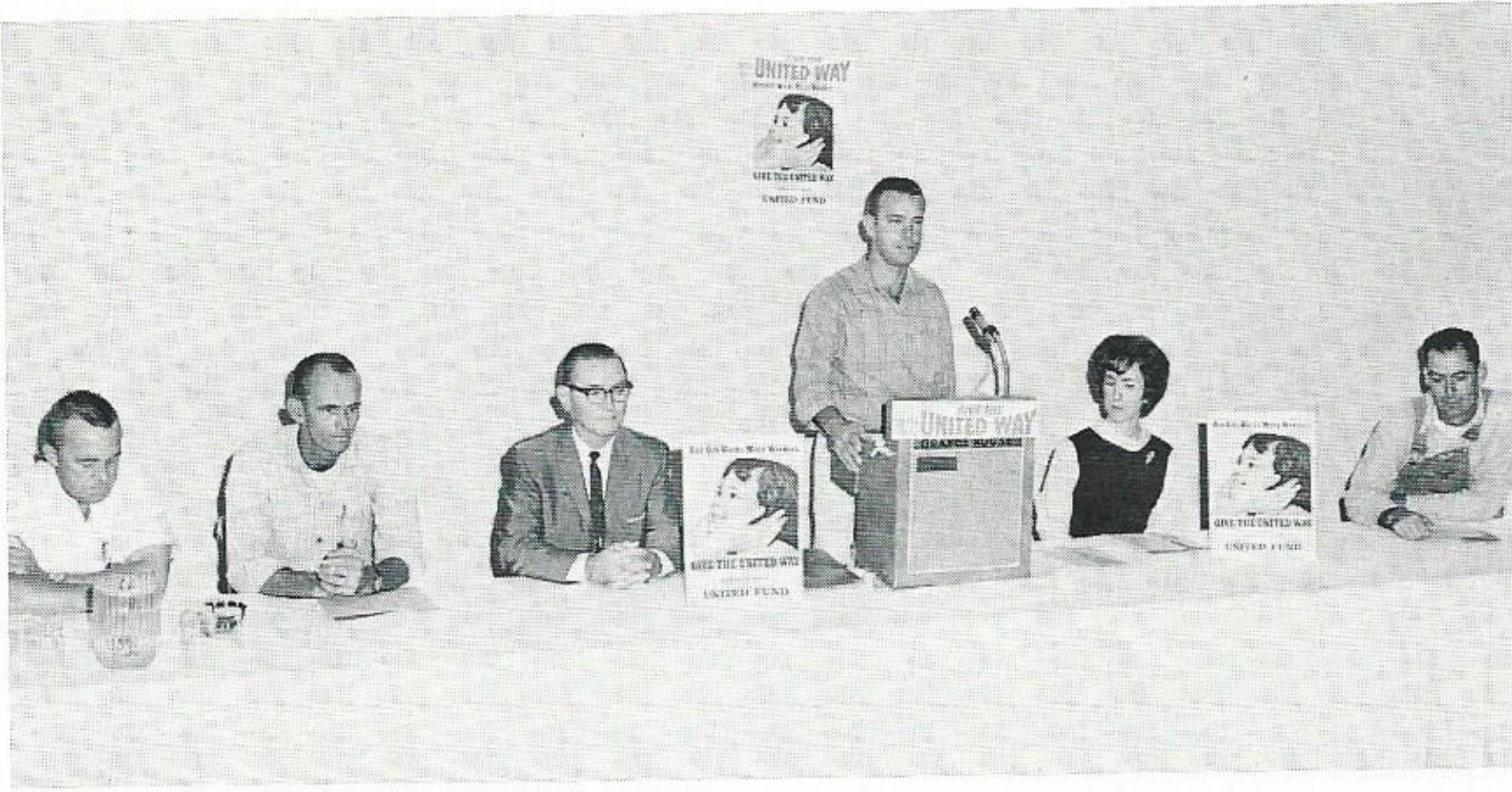
Barney H. Neal, Jr. transferred from Conroe Line to meter reader, Conroe.

Joseph C. Bordelon transferred from Baton Rouge Line to Baton Rouge Service as a serviceman second class.

Nancy O. Clark transferred from Baton Rouge T&D-Engineering to Customers Accounting-Credit Union, as a clerk.

John S. Koles transferred from Baton Rouge Service to Denham Springs Line as a lineman first class.

George W. Henderson, Jr., transferred from Denham Springs Line to Denham Springs Service as a serviceman first class.



ORANGE UNITED FUND DRIVE BEGINS. Howard Trammell, secondary power tester, Orange, provides one of several pep talks earlier this month to launch the Orange District's United Fund campaign. Employees visited some of the agencies supported by United Fund contributions and related their impressions to other employees at the 8 a.m. kickoff meeting. Mr. Trammell, chairman of the drive, reported that the Orange District reached 82 per cent "Fair Share" giving before noon the same day, with 100 per cent participation.

Delores W. Hayes transferred from Purchasing to General Accounting-Stores, Beaumont, as a clerk.

Patsy S. Davis transferred from Purchasing to General Accounting-Stores, Beaumont, as a clerk.

Bescher Promoted To Utility Foreman

DONALD W. BESCHER of Port Arthur was promoted from lineman first class to utility foreman on October 16.



Don Bescher

Mr. Bescher joined our Company as a helper in the Port Arthur Line Department in 1951. He progressed to first class lineman here by 1956. Before joining our Company, he was a merchant seaman.

A native of Woodhaven, New York, he is married to the former Mary Ann Graffagnino of Port Arthur and they have two children, Sandra, 15, and Donald, Jr., 14. The Beschers are members of St. James Catholic Church.



Harold J. David, mechanics helper, Neches Station.

Clovis E. Harris, Jr., mechanics helper, Sabine Station.

James T. Haynes, Jr., helper, T&D-Line, Orange.

Curtis H. Johnston, helper, T&D-Line, Port Arthur.

Rodney J. Tompkins, helper, T&D-Line, Port Arthur.



SABINE STATION FIRES UP FOR UF. That's the story here as Joe Brown, master repairman, Sabine Station, reminds fellow employees of the importance of giving the united way to Orange County's United Fund. Mr. Brown, assistant drive chairman at Sabine, reported that the plant won another United Fund banner within three days with over 80 per cent "Fair Share" pledges. Claude Douget, equipment operator, Sabine Station, was plant chairman of the drive.

Sidney Dupree, Jr., garage mechanic helper, Baton Rouge.

Ronald E. Miller, helper, T&D-Line, Baton Rouge.

Diannie M. Long, departmental clerk, T&D-Engineering, Baton Rouge.

Albert Toussant III, laborer I, T&D, Maringouin.

Harold Richard, helper, T&D-Line, Jennings.

Thorese L. Richert, local office clerk, Jennings.

Willie K. Hagood, clerk, Customers Accounting-Credit & Collections, Beaumont.

Jettie A. Young, clerk, General Accounting-Stores, Beaumont.

Sherry A. Weaver, clerk, Customer Accounting - ARC, Beaumont.

Sandra D. Fonteno, key punch operator, System Billing Records, Beaumont.

Betty J. Bazar, local office clerk, Cleveland.

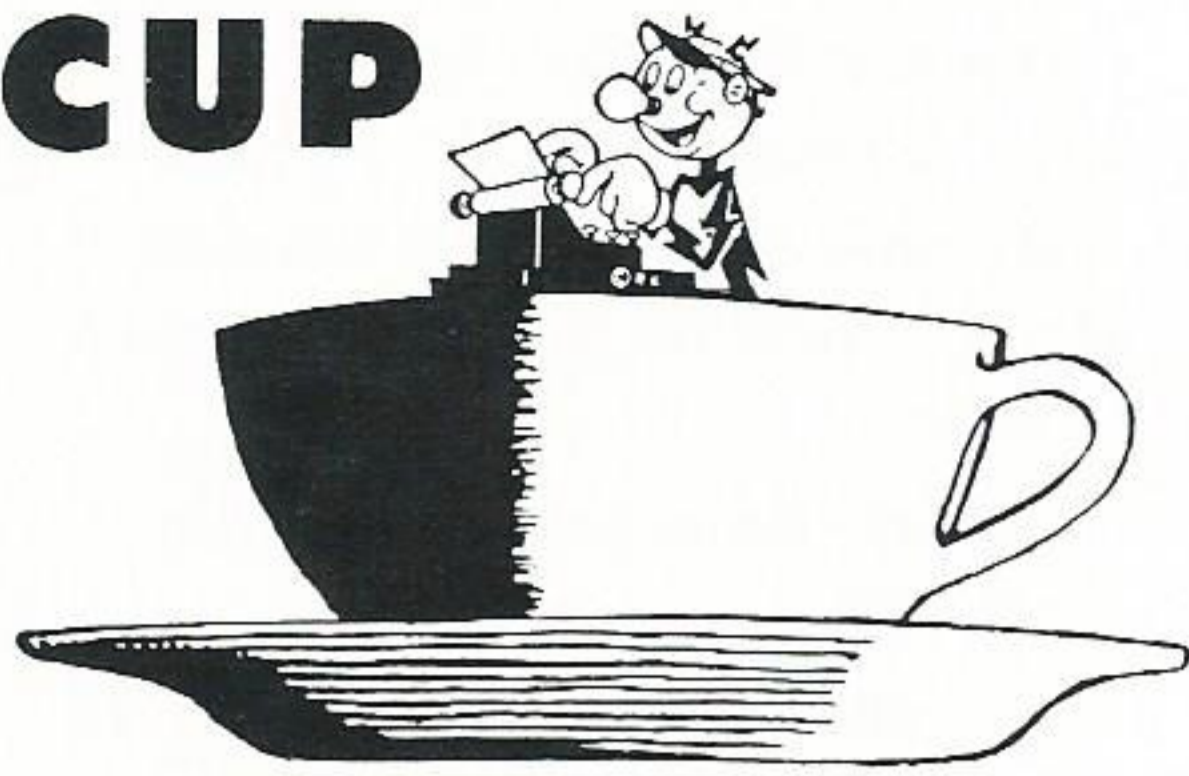
Adal Stout, local office clerk, Sommerville.

Dolores T. Windham, clerk, Customers Accounting, Port Arthur.

Jewell M. Berthelot, clerk, Customers Accounting-Credit & Collections, Baton Rouge.

Marie Woodside, clerk, Customers Accounting, Baton Rouge.

COFFEE CUP



BEAUMONT CUSTOMER ACCOUNTING recently welcomed **Sherry Weaver** to our Company. Sherry is a graduate of Beaumont High School and attended Lamar Tech. She replaces **Shirley Grimes** who resigned to move to Little Rock, Ark., where her husband, **Don**, has been employed as a CPA.

Dorothy Fontana and husband, **James**, vacationed in New Orleans, Mobile and Biloxi.

Ethlyn Wilson and husband, "Boo", and their daughter, **Mary Lynn**, vacationed for two weeks at the "Triple D" Ranch near Woodville.

—By *Betty Clark*

THE BEAUMONT SERVICE CENTER welcomed **Annie J. Atkins** recently. Annie formerly worked in System Engineering. "Their loss is our gain as we are sure Annie will be an asset to our work force."

Lynn DeSaw, his daughter and wife, visited friends and relatives in New York while on vacation.

Fred Roffman took an extended vacation through New Mexico, Arizona and California where he visited Disneyland.

E. O. "Dutch" Fisher, retired garage shop foreman, has been by visiting several times and looks good. Dutch retired July 30. When he retired, he was presented a reel, an ice chest and a cashier's check by his friends. Dutch reports he sure is enjoying using them.

J. R. Abernathy, line foreman, was honored with a retirement party on September 1. He was presented a cashier's check. We are sorry to have Ab retire.

BARNA GAGER, service supervisor, entered St. Elizabeth Hospital on September 27 for an operation on his shoulder. He went home October 1 and is doing fine. Barna really made a good impression on the nurses. He had them all thinking he was a very congenial, even tempered person!

George DeLaMatyr was on vacation for two weeks. He stayed at home and did some work, took a couple of days and went to Baton Rouge and visited relatives.

Several employees here have been in the hospital. **Julius Ross** is back after having been off several weeks with heart trouble. **Harrison Simms**, who runs our Coffee Shop, has been off work for an operation. Sure will be glad to have Harrison back. **J. W. McMinn** was also hospitalized for stomach trouble. "Mac" is building and grounds foreman. **Tom Adams**, building and grounds maintenanceman, has also been on the sick list for a few days.

Pat Kaluza, Engineering and **Pat Jameson**, Storeroom, both have new cars.

—By *Dorothy Gaus*



WHEN THE WINNERS of the Port Arthur Yacht Club's first race of the season were announced, one Port Arthur Gulf Stater could hardly believe it. This Gulf Stater, **Lorraine Dunham**, Engineering Depart-



THE BIG CATCH. Leonard Roy, Port Arthur Meter Department, and his son, Charles, 4½, show off the 32 pound, three foot long, bull red fish Leonard caught at McFadden Beach recently.



RETIREMENT DAY. Wade W. Phillips, an engineer in System Engineering, Beaumont, was honored by fellow employees as he retired from our Company on October 1 after 38 years of service.

ment, along with a friend, Patsy Lloyd, just happened to be a crew member of the first place winning craft piloted by Randy Reed. They certainly deserve our congratulations for this exciting feat.

—By Jo Anne Landry



MURPHY GIBBS, recently retired Lake Charles line foreman, would like to thank all of his Gulf Stater friends for his retirement party and the wonderful gifts he received upon his retirement.

MR. AND MRS. GEORGE TRAHAN and children went to San Antonio, Texas, on their vacation. They visited the Alamo and other places of interest. Several other Substation employees have been on recent vacations. **Mr. and Mrs. Melvin Bergeron** went to Las Vegas; **Jim Gray** and family visited Six Flags; **Mr. and Mrs. Ben Miller** and family went to Pascagoula, Miss., and visited Mrs. Miller's family; **Chester Landry** and family also visited Six Flags.



THE W. W. DUE FAMILY. John Todd Garner, 17-months-old, is the first and only grandchild of W. W. Due, dispatcher in the Beaumont Service Department. Michelle, one of Mr. Due's daughters, marched with the Beaumont Twirling Academy in the Fire Prevention Week Parade,

Mr. and Mrs. Wilmer Ledbetter along with their son and daughter-in-law went to McMinnville, Tenn., and visited Wilmer's father and brother. Wilmer is garage foreman in the Lake Charles Garage.

William E. Harrington from Scranton, Pa., began work on September 7. Bill is a graduate of West Scranton High School. Before becoming an employee of our Company, he was employed at the United States Space Center, Cape Kennedy, Fla. He is employed in Substation.

—By Jo Ann Burnett



Gwen Christian, Beaumont Division Engineering, was wed to James McDonald in the First Methodist Church in Vidor on August 7. After a short trip to Galveston, they are making their home at 205 Archie, Vidor.

Raymond Vice, operator's helper at Louisiana Station, and Doris Mae Marbury were married on September 11 at St. Gerard Majella Catholic Church in Baton Rouge.



while still another daughter, Sharon Due Garner, represented Beaumont Motor Company and the Beaumont Twirling Academy in the Fire Prevention Week Parade. Sharon also participated in the Cav-Oil-Cade parade in Port Arthur on October 16.

Clarence A. Bourgeois, switchboard operator at Louisiana Station, and Billy Dean were wed on August 6.

Harry G. Hargis, substation station operator, Orange T&D, and Mary Anne Blankenship were wed on September 11.

Kerney P. Latiolais, operator's helper at Willow Glen Station, and Hilda Venable were wed on August 28.

Larry B. Boehme, helper, Orange T&D-Line, and Nancy Roseanne Brent were wed September 24.



Mr. and Mrs. Paul T. LaPoint, Lafayette, on the birth of their fourth child and third daughter, September 24. Mr. LaPoint is an engineering assistant in Lafayette.

Mr. and Mrs. Nathan Bibb, he's a senior engineering assistant in System Standards-Design, Beaumont, on the birth of a daughter, **Jodie Ellen**, on September 3.

(Continued on next page)



(Continued from page 19)

Mr. and Mrs. Rayford Bertrand, Lafayette, on the birth of their son, **Randy Joseph**, September 10. Mrs. Bertrand is the former Nola Stelly and Mr. Bertrand is a substation mechanic in Lafayette.

Mr. and Mrs. Charles Breaux, Lafayette, on the birth of their son, **Jeffrey David**, June 19. Mr. Breaux is utility foreman in the Lafayette Substation Department.

Mr. and Mrs. Rodney R. Ray, he's an operator's helper at Louisiana Station, on the birth of their second child, a daughter, **Renee Estelle**, September 10. Mrs. Ray is the former Shirley Wilson of Mobile, Alabama.

Mr. and Mrs. Michael J. Yennie, he's an accountant in Plant Accounting, Beaumont, on the birth of their daughter, **Michele Denise**, September 2.

Mr. and Mrs. Neil M. Teague, he's a relayman first class, Beaumont, on the birth of their daughter, **Penny Gail**, August 16.

Mr. and Mrs. Clovis E. Harris, Jr., he's a mechanic's helper at Sabine Station, on the birth of son, **Cary Scott**, September 6.

Mr. and Mrs. Nathan E. Bibb, he's a senior engineering assistant in Standards, Beaumont, on the birth of their daughter, **Jodie Ellen**, September 3.

Mr. and Mrs. Harmon L. Whisenhunt, he's a shop and field tester, Beaumont, on the birth of their son, **Jon Charles**, September 5.

Mr. and Mrs. Raymond J. Adrio, he's a draftsman in System Services, Beaumont, on the birth of their daughter, **Susan Amanda**, August 23.

Mr. and Mrs. Sheldon P. Fruge, he's a repairman first class at Neches Station, on the birth of their son, **David Preston**, September 11.

Mr. and Mrs. John E. Hood, he's a repairman second class at Louisiana Station, on the

birth of their son, **David Paul**, August 22.

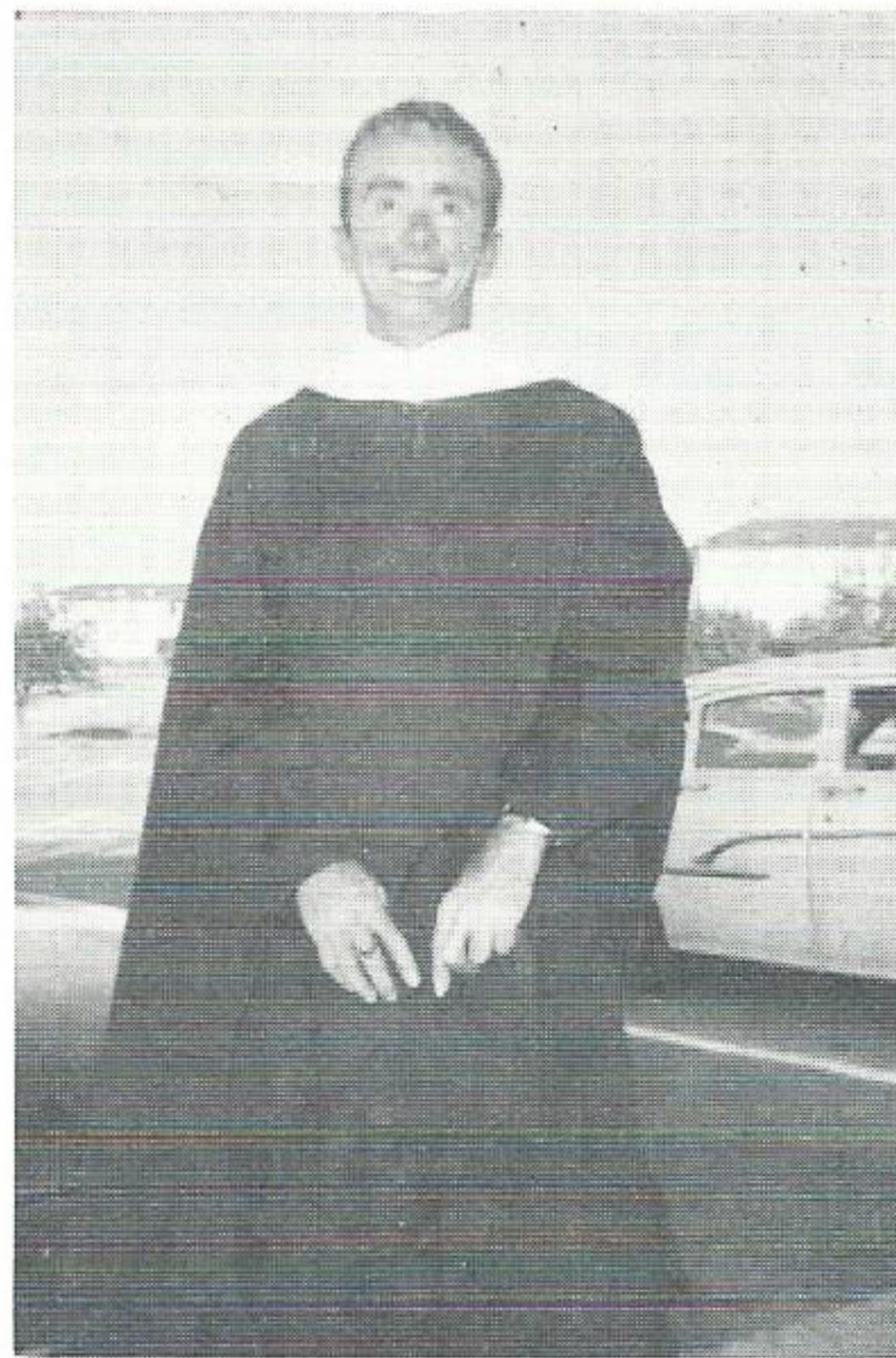
Mr. and Mrs. Milton H. Pharr, he's an equipment operator at Nelson Station, on the birth of their daughter, **Helena Odette**, August 26.

Mr. and Mrs. Curley P. Rogers, he's a lineman first class in Lake Charles T&D, on the birth of their son, **Michael Lynn**, September 13.

Mr. and Mrs. William O. Reeves, II, he's an engineer in the Lake Charles T&D, on the birth of their daughter, **Kimberly Lynn**, September 12.

Mr. and Mrs. Jerry P. Moore, he's an auxiliary operator at Louisiana Station, on the birth of their son, **Gregory Paul**, September 8.

Mr. and Mrs. John L. Sullivan, he's a substation mechanic first class in Baton Rouge, on the birth of their daughter, **Hope**



IN GRADUATE SCHOOL. William H. Foskett, son of Mr. and Mrs. H. C. "Bert" Foskett, Navasota, received his master's degree from Texas Christian University in Fort Worth on August 27. He is now enrolled in the graduate school of Claremont College, Claremont, California, working on his doctorate. Mr. Foskett is a mechanic in the Navasota Division garage. The Fosketts also have a daughter now in California who is also a graduate of Texas Christian University.

Ann, September 16.

Mr. and Mrs. Joe A. Hopkins, he's an engineering assistant in Project Section, Beaumont, on the birth of their daughter, **Nina Ruth**, October 4.

(Answer to Safety

Quiz on page 12)

(c) The driver of the oncoming vehicle may recover and attempt to pull back into his lane. So, it's safer to pull to the right. If there's time, in addition to blowing the horn, you might flick the lights on and off.

• Dwelling fires have cost U. S. homeowners more than \$300,000,000 yearly since 1958, National Fire Protection Association figures show. More than a half-million homes were damaged or destroyed each year.



NEWLY WEDS. Mr. and Mrs. George Myers were wed August 20 in the First Methodist Church at Nederland. The bride is the former Carol Lee Smith of Nederland. The groom is a residential sales representative in the Port Arthur Sales.

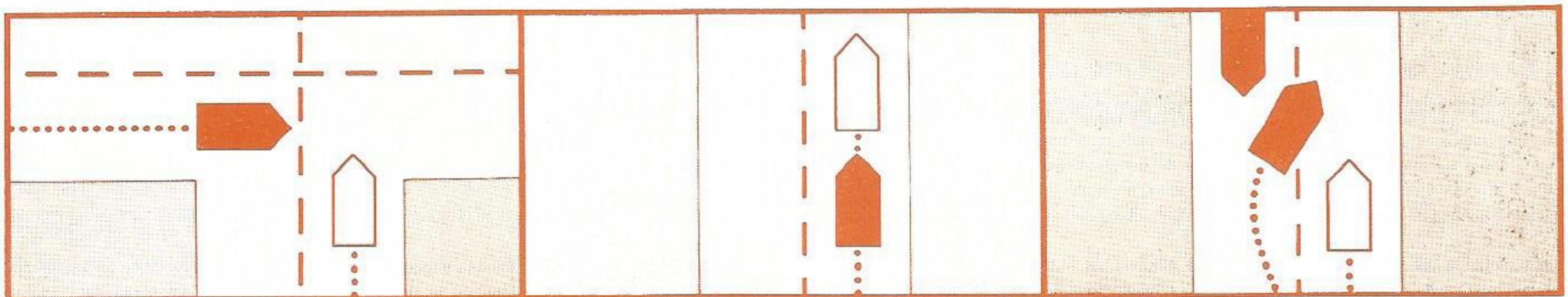


You will. Will he?

MAYBE YOU OBEY stop signs and signals. Some drivers don't. So never assume the right-of-way blindly. Protect yourself by driving defensively.

If someone follows you too close, don't speed up. Slow down a little and encourage him to pass. Watch out for the other guy and stay out of his way.

When being passed, don't fight it. He may cut you off. Let him have his way. Remember, being in the right isn't enough. You could be dead right.



Watch out for the other guy!

Published to save lives in cooperation with The Advertising Council and the National Safety Council.



AFTER FIVE DAYS RETURN TO

*Plain
Talker*

P. O. BOX 2951
BEAUMONT TEXAS

RETURN POSTAGE GUARANTEED

Bulk Rate
U. S. POSTAGE PAID
Beaumont, Texas
Permit No. 11

ONE GIFT . . . MANY WONDERS

FAIR SHARE FASHION NOTE. Although most people wear them on their lapel, Elaine Kennedy, a clerk in Beaumont Division's Customer Accounts, turned a pair of United Appeals Fair Share pins into earrings. The emblem shows that the wearer has given a Fair Share through the local United Campaign this year.

When we all put our hearts, minds and dollars to work the United Way, we are doing our utmost to keep our communities healthy, vigorous and good places to live. So be fair to your friends and neighbors, to yourself and to your family, give full support to your local United Campaign. Give a Fair Share.

Please remember, the United Campaigns objectives are not just to raise money, but to raise human hopes. They're not just a matter of relieving the number of independent drives. They're the best way to relieve the hardships, misfortune, and sorrow of others.

You, too, can wear your Fair Share pin with pride and with a smile as pretty as Elaine's when you know that you have done a good job.

